



SQL Express Download
EPLAN Platform Version 2.9/2.9SP1
Status: 05/2021



EPLAN GmbH & Co. KG
Technical information



Copyright © 2021 EPLAN GmbH & Co. KG

EPLAN GmbH & Co. KG assumes no liability for either technical or printing errors, or for deficiencies in this technical information and cannot be held liable for damages that may result directly or indirectly from the delivery, performance, and use of this material.

This document contains legally protected information that is subject to copyright, trademark law, design law and other legal provisions. All rights are protected. This document or parts of this document may not be copied or reproduced by any other means without the express prior consent of EPLAN GmbH & Co. KG.

The software described in this document is subject to a licensing agreement and, if applicable, other contractual provisions. The utilization and reproduction of the software are only permitted in accordance with the specifications of this license agreement and, if applicable, any further existing contractual specifications.

RITTAL® is a registered trademark of Rittal GmbH & Co. KG.

EPLAN®, EPLAN Electric P8®, EPLAN Fluid®, EPLAN Preplanning®, EPLAN Pro Panel®, EPLAN Smart Wiring®, EPLAN Harness proD®, ePULSE®, eVIEW®, eBUILD, SYNGINEER and EPLAN Cogineer® are registered trademarks of EPLAN GmbH & Co. KG.

Windows 7®, Windows 8.1®, Windows 10®, Windows Server 2008 R2®, Windows Server 2012®, Windows Server 2012 R2®, Microsoft Windows®, Microsoft Office®, Microsoft® Excel®, Microsoft® Access® and Notepad® are registered trademarks of the Microsoft Corporation (in accordance with the laws of the State of Washington).

PC WORX®, CLIP PROJECT®, INTERBUS® and PROFINET® are registered trademarks of Phoenix Contact GmbH & Co. KG.

AutoCAD® and AutoCAD Inventor® are registered trademarks of Autodesk, Inc.

STEP 7®, SIMATIC® and SIMATIC HW Config® are registered trademarks of Siemens AG.

InstallShield® is a registered trademark of InstallShield, Inc. FLEXERA SOFTWARE LLC.

Adobe® Reader® and Adobe® Acrobat® are registered trademarks of Adobe Systems Inc.

Intel® is a registered trademark of Intel Corporation.

Citrix® is a registered trademark of Citrix Systems, Inc.

TwinCAT® is a registered trademark of Beckhoff Automation GmbH.

Unity Pro® is a registered trademark of Schneider Electric S.E.

RSLogix 5000® and RSLogix Architect® are registered trademarks of Rockwell Automation Inc.

All other product names and trade names are trademarks or registered trademarks of their respective owners.

EPLAN uses the Open Source software 7-Zip (7z.dll), Version 16.00, Copyright © by Igor Pavlov. The source code of 7-Zip is subject to the GNU Lesser General Public License (LGPL). The source code of 7-Zip and details on this license can be found on the following Web site: <http://www.7-zip.org>

EPLAN uses the Open Source software Open CASCADE, Version 7.5.0, Copyright © by Open CASCADE S.A.S. The source code of Open CASCADE is subject to the Open CASCADE Technology Public License. The source code of Open CASCADE and details on this license can be found on the following website: <http://www.opencascade.org>

EPLAN makes an import function available which uses eCI@ss. The use of the eCI@ss standard is subject to a license and requires registration and downloading in the download portal: <http://www.eiclassdownload.com>



EPLAN uses the dotNetRDF © library: <http://www.dotnetrdf.org>, Copyright (c) 2009-2013 dotNetRDF Project (dotnetrdf-develop@lists.sf.net). The source code is subject to the MIT license: <https://opensource.org/licenses/MIT>

EPLAN uses Google Chromium ©, Version 88. <https://www.chromium.org>, Copyright © 2015 The Chromium Authors. The source code is subject to the BSD license.

EPLAN uses the Chromium Embedded Framework ©, Version 4324. <https://bitbucket.org/chromiumembedded/cef>, Copyright © 2008-2020 Marshall A. Greenblatt. Portions Copyright © 2006-2009 Google Inc. The source code is subject to the BSD license.

EPLAN uses CEFSharp ©, Version 88. <https://cefsharp.github.io>, Copyright © The CefSharp Authors. The source code is subject to the BSD license.

EPLAN uses Microsoft Unity ©, Version 4.0.1. <https://github.com/unitycontainer/unity>, Copyright © Microsoft. The source code is subject to the Apache license, Version 2.0.

This application incorporates Open Design Alliance software pursuant to a license agreement with Open Design Alliance. Open Design Alliance Copyright © 2002–2020 by Open Design Alliance. All rights reserved.

EPLAN uses the PDFlib library, Version 9.2.0, Copyright © by PDFlib GmbH. Copyright reserved.

EPLAN uses the PLOP library, Version 5.3p1, Copyright © by PDFlib GmbH. All rights reserved.

The license management portion of this Licensee Application is based upon one or more of the following copyrights: Sentinel® RMS, © 2005 SafeNet, Inc., all rights reserved, and Sentinel® EMS, © 2009 SafeNet, Inc., all rights reserved. Sentinel® is a registered trademark of SafeNet, Inc.

EPLAN uses the the Open Source software QR Code generator library, Version 1.2.1. <https://www.nayuki.io/page/qr-code-generator-library>, Copyright © by Project Nayuki. The source code is subject to the MIT License.

The complete license texts for the Open Source licenses mentioned above are available in the following file:

<Installation directory>\bin\License.txt



Table of Contents

Download the Free MS SQL Versions..... 5

Which Version? 5

MS SQL 2016 Express 6

MS SQL 2017 Express 9

MS SQL 2019 Express 11

Download the Free MS SQL Versions

The free versions of Microsoft SQL Express are available on the websites of Microsoft. You can find the download links for different versions in the following paragraphs. All the versions, which are listed there, are supported by EPLAN.

Which Version?

The Microsoft SQL versions 2016 / 2017 / 2019 EXPRESS, STANDARD, and ENTERPRISE are all approved by EPLAN to be used with the EPLAN platform.

More information about the software requirements and approvals can be found on the homepage:

https://www.eplan.help/en-us/Infoportal/Content/htm/portal_software_approvals.htm

MS SQL 2016 Express

Open the following page in your Internet browser:

- <https://www.microsoft.com/en-us/download/details.aspx?id=56840>

Microsoft® SQL Server® 2016 Service Pack 2 Express

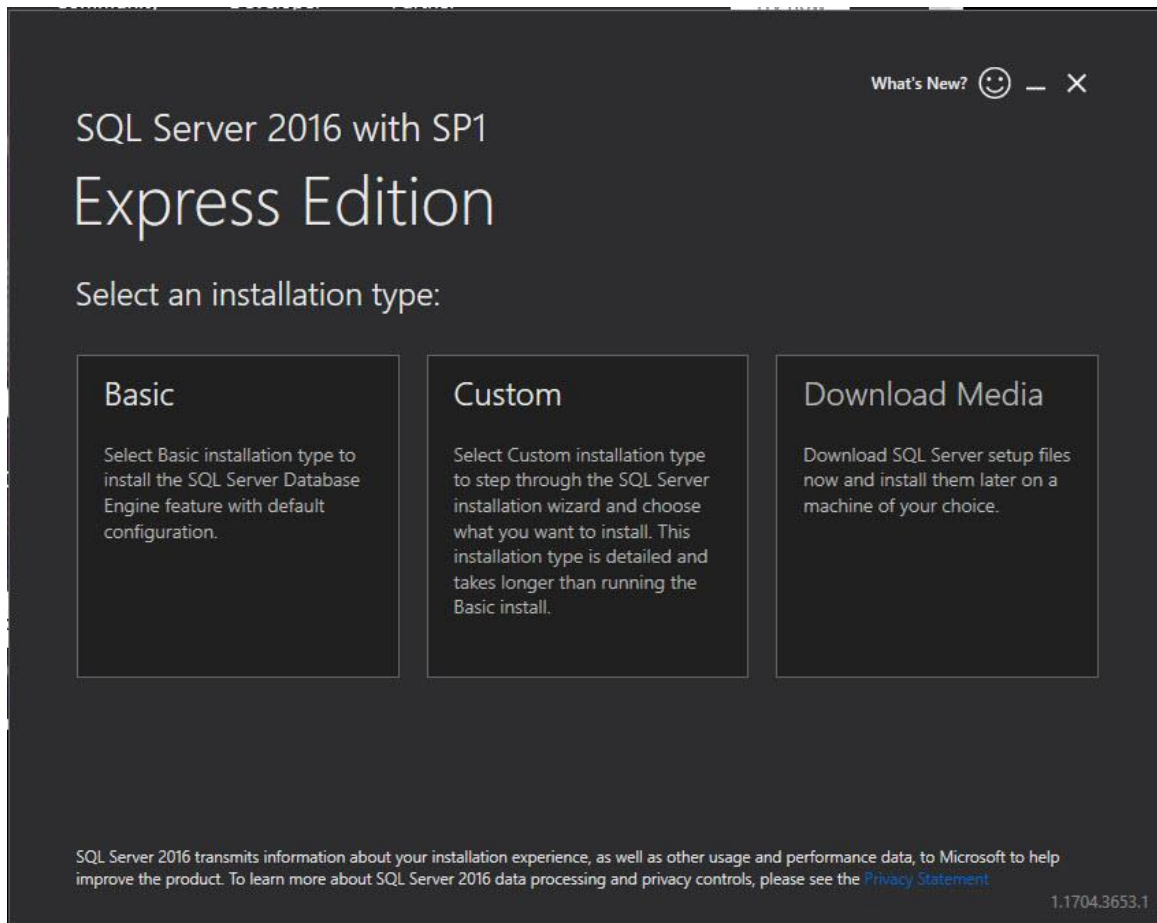
Important! Selecting a language below will dynamically change the complete page content to that language.

Select Language:

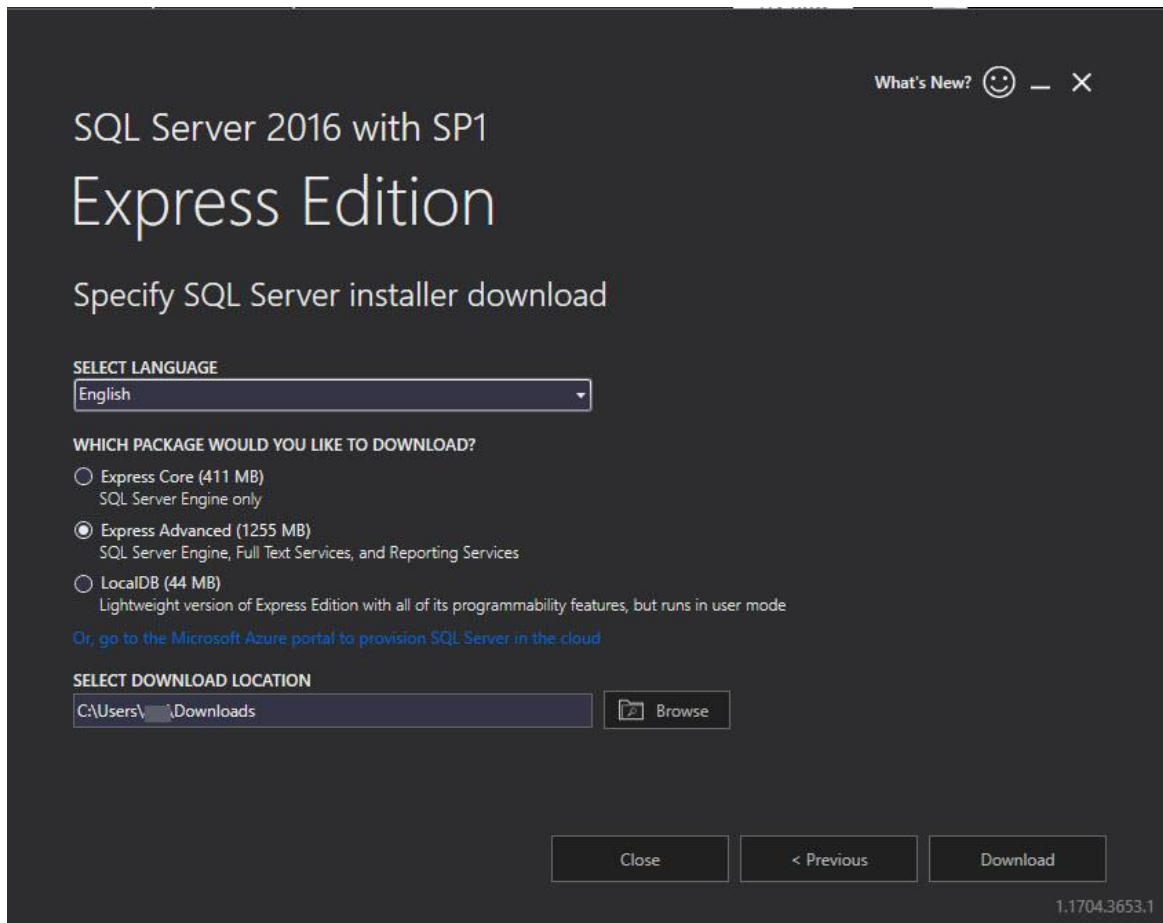
Microsoft® SQL Server® 2016 SP2 Express is a powerful and reliable free data management system that delivers a rich and reliable data store for lightweight Web Sites and desktop applications.

- [+ Details](#)
- [+ System Requirements](#)
- [+ Install Instructions](#)
- [+ Additional Information](#)

- Click on **[Download]**.
- **Save and run** the *SQLServer2016-SSEI-Expr.exe* file.



- Click on **[Download Media]**.
- Download the *Express Advanced* package.

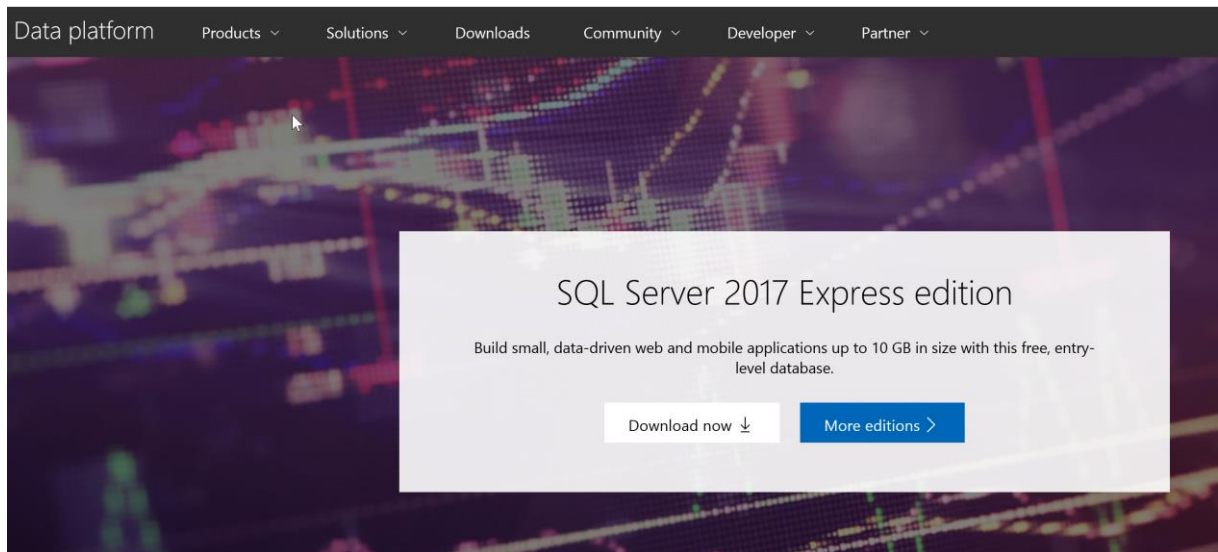


- Please refer to the installation instructions before the installation.

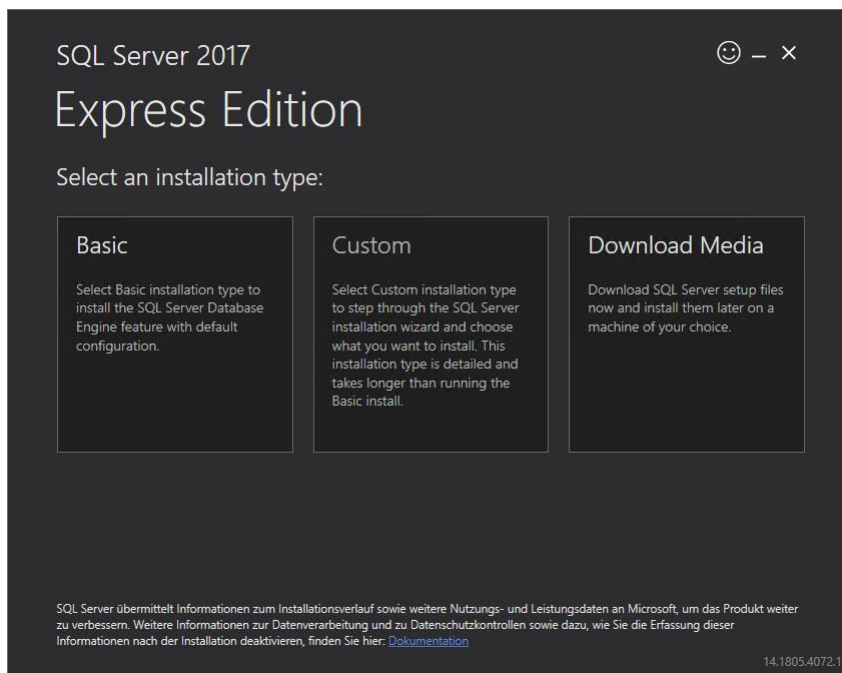
MS SQL 2017 Express

Open the following page in your Internet browser:

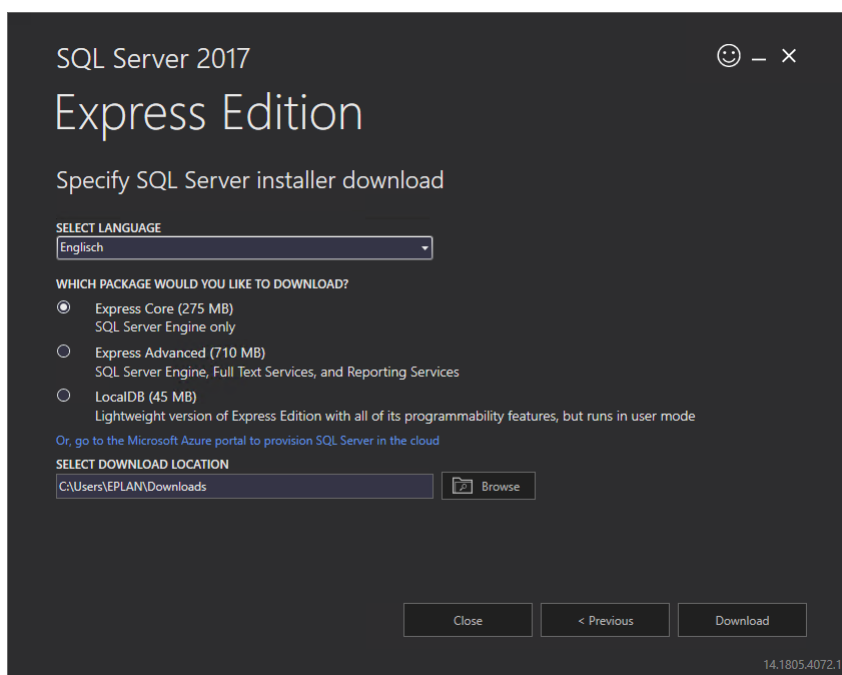
- <https://www.microsoft.com/en-us/sql-server/sql-server-editions-express>



- Click on **[Download now]** and save the `SQLServer2017-SSEI-Expr.exe` file locally.
- **Run** the `SQLServer2017-SSEI-Expr.exe` file.
- Click on **[Download Media]**.



- Download the *Express Advanced* package.



- Please refer to the installation instructions before the installation.

MS SQL 2019 Express

Open the following page in your Internet browser:

- <https://www.microsoft.com/en-US/download/details.aspx?id=101064>

Microsoft® SQL Server® 2019 Express

Important! Selecting a language below will dynamically change the complete page content to that language.

Select Language:

Microsoft® SQL Server® 2019 Express is a powerful and reliable free data management system that delivers a rich and reliable data store for lightweight Web Sites and desktop applications.

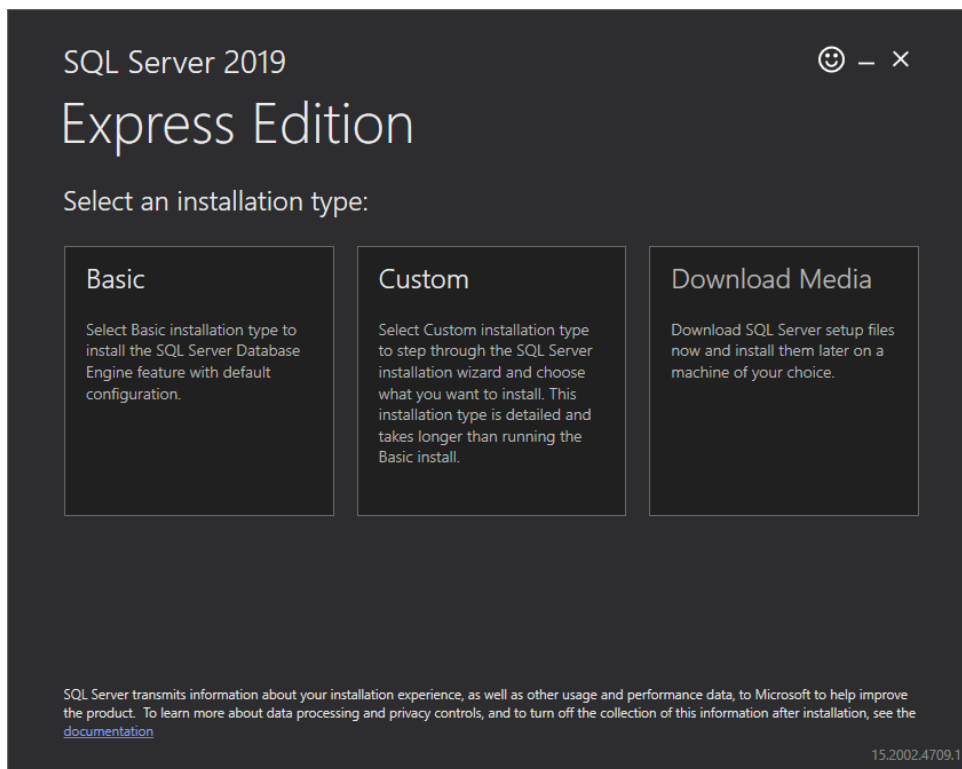
[+ Details](#)

[+ System Requirements](#)

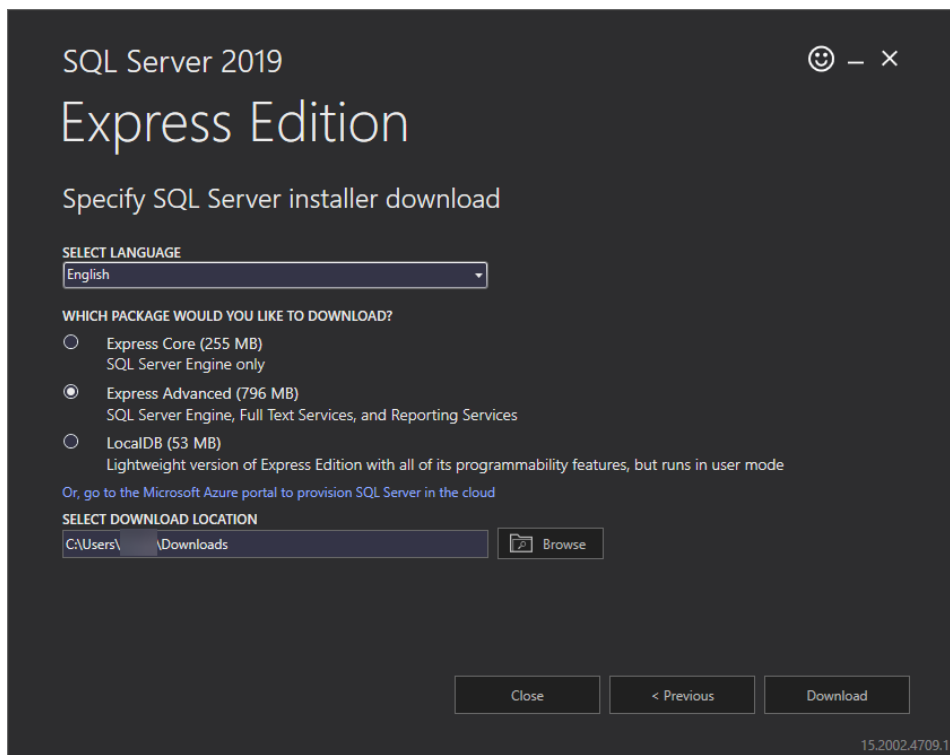
[+ Install Instructions](#)

[+ Additional Information](#)

- Click on **[Download]**.
- **Save and run** the *SQLServer2019-SSEI-Expr.exe* file.



- Download the *Express Advanced* package.



- Please refer to the installation instructions before the installation.



EPLAN GmbH & Co. KG
An der alten Ziegelei 2
40789 Monheim am Rhein · Germany
Telefon: +49 (0) 21 73 / 39 64-0
Telefax: +49 (0) 21 73 / 39 64-25
Info@eplan.de · www.eplan.de