



EPLAN License Manager Installation Guide

Version 7.1.8
Status: 03/2019



EPLAN Software & Service GmbH & Co. KG
Technical Information



Copyright © 2019 EPLAN Software & Service GmbH & Co. KG

EPLAN Software & Service GmbH & Co. KG assumes no liability for either technical or printing errors, or for deficiencies in this technical information and cannot be held liable for damages that may result directly or indirectly from the delivery, performance, and use of this material.

This document contains legally protected proprietary information that is subject to copyright. All rights are protected. This document or parts of this document may not be copied or reproduced by any other means without the prior consent of EPLAN Software & Service GmbH & Co. KG.

The software described in this document is subject to a licensing agreement. The use and reproduction of the software is only permitted within the framework of this agreement.

RITTAL® is a registered trademark of Rittal GmbH & Co. KG.

EPLAN®, EPLAN Electric P8®, EPLAN Fluid®, EPLAN Preplanning®, EPLAN Pro Panel® and EPLAN Harness proD® are registered trademarks of EPLAN Software & Service GmbH & Co. KG.

Windows 7®, Windows 8®, Windows 8.1®, Windows 10®, Windows Server 2008 R2®, Windows Server 2012®, Windows Server 2012 R2®, Windows Server 2016®, Microsoft Windows®, Microsoft® Excel®, Microsoft® Access® and Notepad® are registered trademarks of the Microsoft Corporation.

PC WORX®, CLIP PROJECT®, and INTERBUS® are registered trademarks of Phoenix Contact GmbH & Co.

AutoCAD® and AutoCAD Inventor® are registered trademarks of Autodesk, Inc.

STEP 7®, SIMATIC® and SIMATIC HW Config® are registered trademarks of Siemens AG.

InstallShield® is a registered trademark of InstallShield, Inc.

Adobe® Reader® and Adobe® Acrobat® are registered trademarks of Adobe Systems Inc.

TwinCAT® is a registered trademark of Beckhoff Automation GmbH.

Unity Pro® is a registered trademark of Schneider Electric.

RSLogix 5000® and RSLogix Architect® are registered trademarks of Rockwell Automation.

All other product names and trade names are trademarks or registered trademarks of their respective owners.

EPLAN uses the Open Source software 7-Zip (7z.dll), Version 16.00, Copyright © by Igor Pavlov. The source code of 7-Zip is subject to the GNU Lesser General Public License (LGPL). The source code of 7-Zip and details on this license can be found on the following Web site: <http://www.7-zip.org>



Table of Contents

Introduction	5
Notes for the Reader	6
Preconditions	7
Software.....	7
Approved for	8
Installing the EPLAN License Manager	9
Updating an existing EPLAN License Manager	14
Checking of the existing EPLAN License Manager installation ...	14
Updating the EPLAN License Manager 7.1.7	15
Updating the primary and secondary EPLAN License Manager ..	16
Configuring the DCOM Interface.....	18
Approved Windows Server Operating Systems.....	18
Windows 7, Windows 8.1 and Windows 10.....	27
Installing the EPLAN License Manager Monitor	35



Introduction

Dear users,

The team at EPLAN Software & Service GmbH & Co. KG is pleased to welcome you as a new user.

This document describes the installation of the EPLAN License Manager (ELM). This application will allow you to manage EPLAN product licenses on a network. Communication between server and client computers takes place via the "Remote Dongle Service" (RDS) utility, which is set up in the Control Panel program and automatically started during installation of the EPLAN License Manager.

Furthermore, this document describes the installation of the EPLAN License Manager monitor. You can use this tool to display the licensing status of an EPLAN License Manager.

When using the EPLAN License Manager to license EPLAN products, it is *absolutely essential* that you update the licensing on every connected client computer.

These instructions are aimed at administrators who are already familiar with EPLAN and who have an in-depth knowledge of programs and systems.

Notes for the Reader

Before you begin reading, please note the following symbols and styles used in this document:

Warning:

Texts preceded by this image are warnings. You should be absolutely sure to read this warning before proceeding!

Note:

Text preceded by this image contains extra notes.

Tip:

Useful tips to facilitate your interaction with the program are presented after this image.

Example:

Examples are highlighted by this symbol.

- User interface elements are marked in **bold** so they can immediately be located in the text.
- *Italic* text provides particularly important information that you should definitely pay attention to.
- Code examples, directory names, and direct input (among others) are displayed in a `non-proportional font`.
- Function keys, keyboard keys, and buttons within the program are shown in square brackets (e.g., **[F1]** for the "F1" function key).

- To improve the flow of the text, we often use "menu paths" in this document (for example, **Start > Run**). In order to find a particular program function, the menus and options shown in a menu path must be selected in the sequence shown. For example, the menu path mentioned above calls up the EPLAN help system.
- The operating information provides step-by-step instructions for reaching specific targets, and in many places, after the right-arrow symbol \Rightarrow you'll also find the reaction of the program to your action.
- In combination with settings or fields (e.g., check boxes) which can only be switched on or off, in this document we often use the term "activate" (after which the setting is active) and "deactivate" (after which the setting is inactive)

Preconditions

In order to run the EPLAN License Manager the following conditions must be satisfied:

Software

The following software preconditions must be satisfied:

- An operating system for which the EPLAN License Manager has been released must be installed (see also the following section: "Approved for").
- It is also assumed that the computer systems all have the latest security updates.
- The installation must be performed from a user account with rights equivalent to an Administrator.
- If the license contains a dongle, it must be connected to the computer on which EPLAN License Manager is to be installed.

 **Note:**

Characters that do not occur in the Latin alphabet are not supported by the EPLAN License Manager (for example Chinese, Cyrillic characters, etc.). If you want to use the EPLAN License Manager, you may only use characters in ASCII format for your user and computer names.

Please inform yourself about the hardware prerequisites and the software approvals of the EPLAN Platform before installing EPLAN products. This information is available in the EPLAN performance descriptions of the respective products.

Approved for

The approval is based on the EPLAN Platform.

https://www.eplan.help/en-us/Infoportal/Content/htm/portal_software_approvals.htm

Installing the EPLAN License Manager

Customers who already use the EPLAN License Manager have to connect the existing dongle to their system. No dongle is required anymore for new customers.

Before beginning the installation of the EPLAN License Manager, make sure that the dongle provided is connected to the computer.



Note:

If your computer is connected to the Internet, the Dongle driver will be installed automatically from the Windows Update page. Should your computer not be connected to the Internet, you can locate the driver on the DVD in directory `ELM\Services (x64)\Drivers`. Start the file `HASPU-serSetup.exe` [here](#).

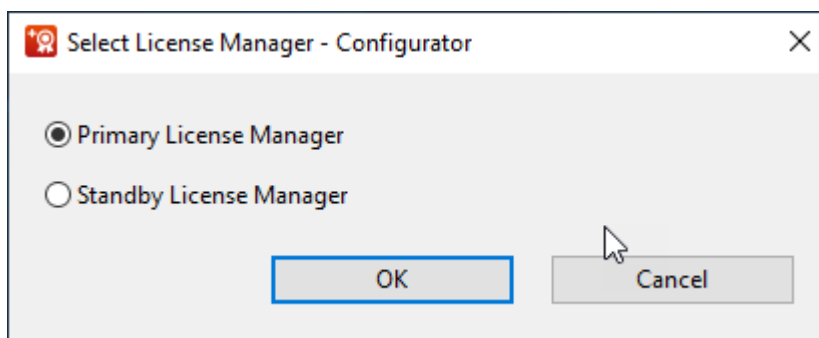
The installation is always carried out in English.

To activate and / or license the EPLAN License Manager you require an active Internet connection.

1. Switch to the `ELM` directory on one of the EPLAN Platform products. Alternatively, you can download the EPLAN License Manager from our Support.
 2. Open the `ELM\License Manager (x64)` directory and here double-click the `setup.exe` file.
 3. Answer **[Yes]** to confirm the subsequent safety prompt.
 4. In the subsequent dialog click **[Install]**.
- ⇒ The installation wizard for the EPLAN License Manager is opened.



5. In the subsequent installation wizard dialogs you will confirm the license conditions among other things.
 6. Click **[Install]** once more to start the actual installation.
- ⇒ The **Select License Manager Configurator** dialog opens during the installation.



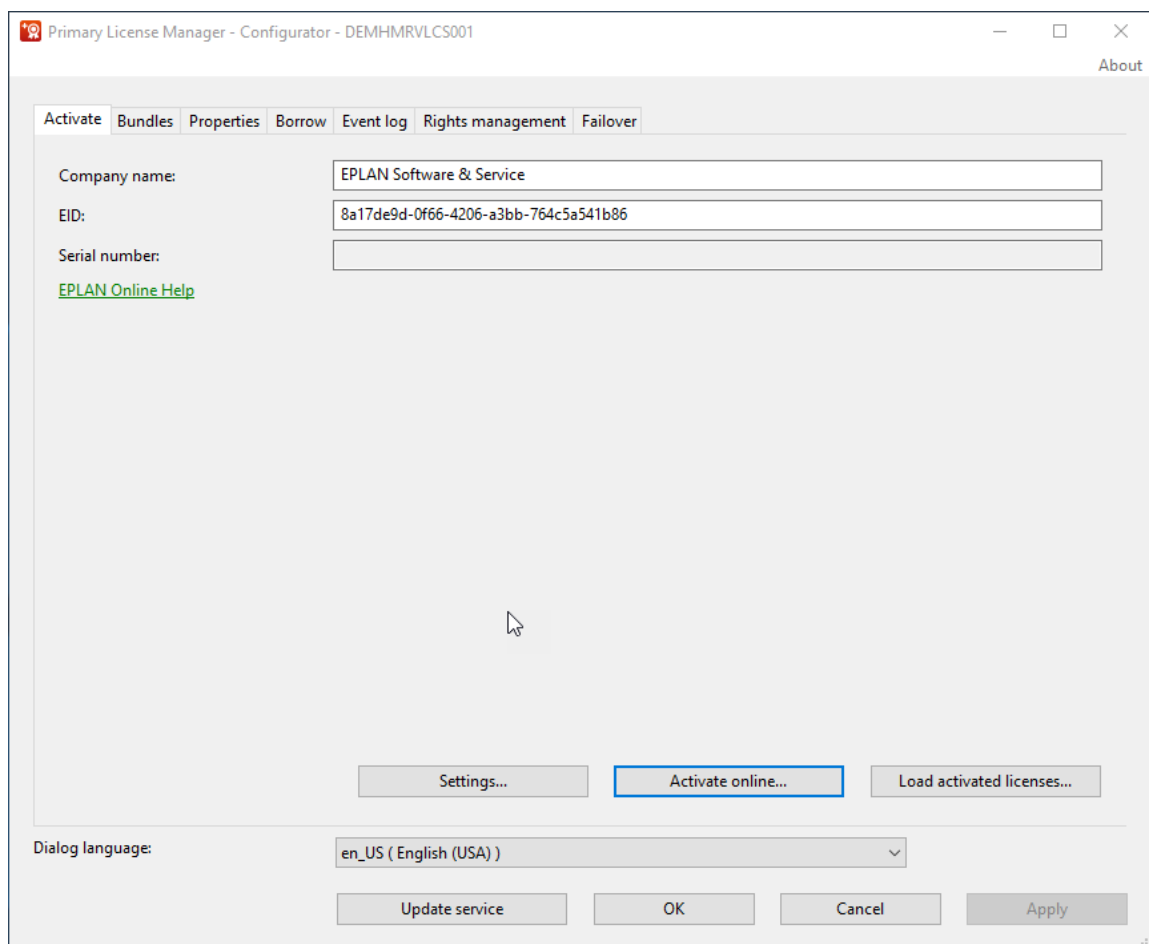
7. Here select the operating mode of your EPLAN License Manager.

Warning:

If this is the first EPLAN License Manager in your system environment ensure that the **Primary License Manager** is selected. The **Standby License Manager** option may only be used if your validation code includes the **Failure protection** functionality.

⇒ The dialog **Primary License Manager - Configurator** is opened. This allows you to activate your license data via the entitlement provided.

8. First enter the name of your company in the **Company name** box.



9. Enter your entitlement number in the **EID** field and then click **[Activate Online]**.

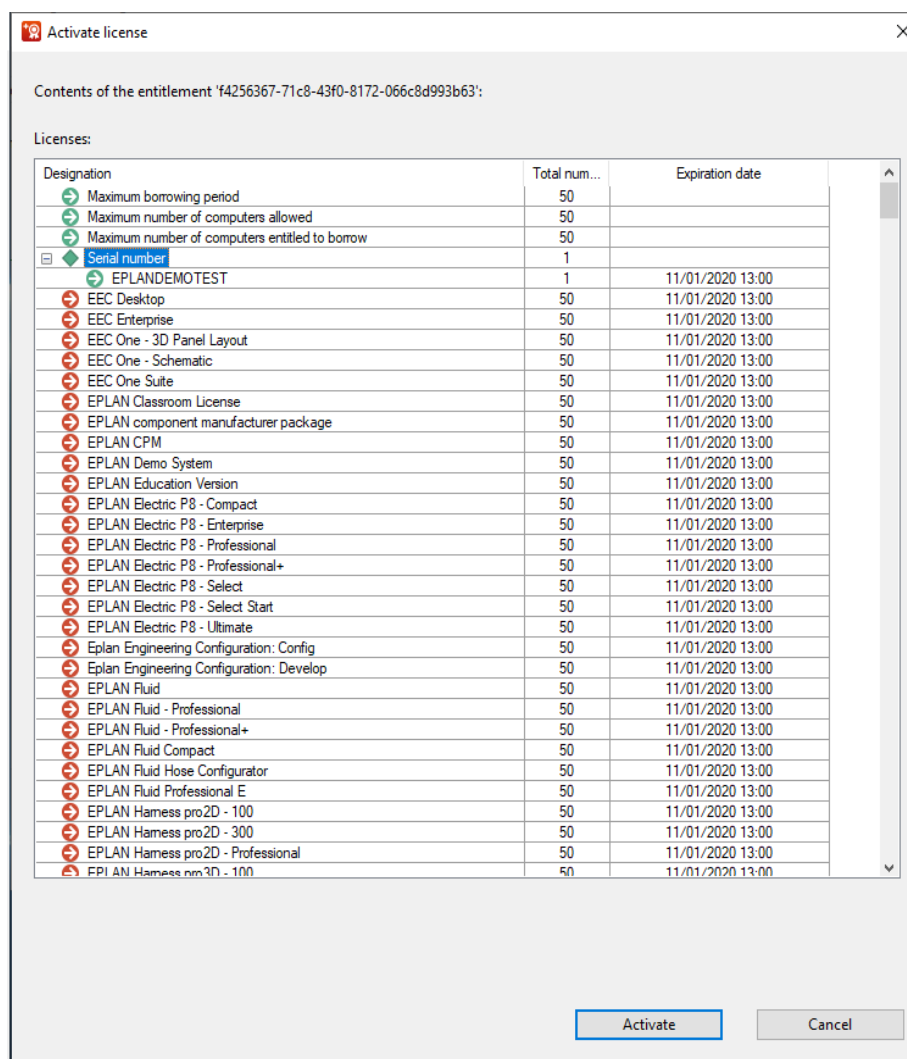
 **Notes:**

At this point, you can also leave the **Serial number** field empty and enter this number later. To do this, click **[Cancel]** and exit the installation wizard.


You must have an active Internet connection to activate your license. Alternatively, an activation can also be carried out offline under http://www.eplan.help/en-us/Infoportal/Content/misc/EPLAN_License/Content/htm/EPLAN_License_rehost_starthtm.

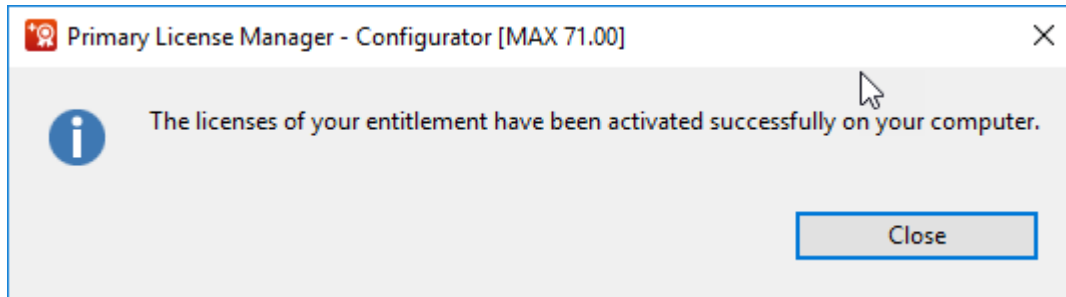
You can also enter your proxy connection by using the **[Settings]** button.

⇒ The content of your license scope is displayed in the **Activate license** dialog.



10. Click **[Activate]**.

 **Note:**
The duration of the Online activation depends on the scope of your license and can require several minutes.



11. Click **[Close]** to end the dialog.

The following section "Configuring the DCOM Interface" on Page 18 explains how to configure the DCOM interface for operating the EPLAN License Manager.

Updating an existing EPLAN License Manager

Only *one* EPLAN License Manager can be run on a given computer.

Checking of the existing EPLAN License Manager installation

Warning:

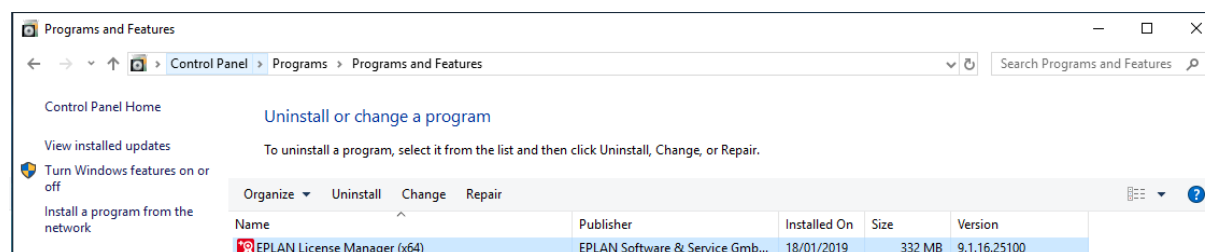
Before you begin with the update, please check the system on which the EPLAN License Manager is installed as well as the EPLAN client systems with regard to the following information:

Are you using a 64-bit operating system?

For several years the EPLAN License Manager has been made available as a 64-bit program. An update is only possible on a 64-bit operating system. If you are still using a 32-bit operating system, you need to move the EPLAN License Manager to a suitable system.

Are you already using a 64-bit EPLAN License Manager?

Check the version of your EPLAN License Manager. To this purpose call up the popup menu on the Windows **[Start]** button and select the menu item **Programs and Features**.



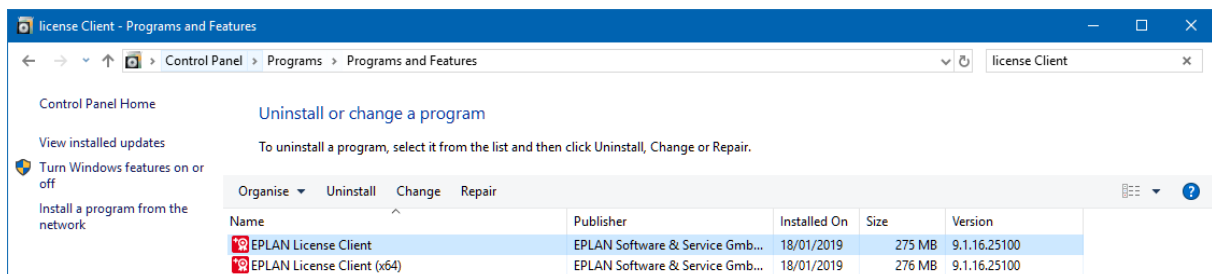
A 32-bit version (x86) of an installed EPLAN License Manager *must be removed* before you install or update the 64-bit version.

Are licenses currently borrowed from the EPLAN License Manager?

If you have borrowed licenses from the EPLAN License Manager that is to be updated, you *must return these before the update*.

Do all License Clients correspond to at least Version 9.1.16.25100?
Check this on the client systems by using the **Programs and Features** functionality of the operating system. Here you can recognize the installed version of the EPLAN License Client.

If an EPLAN system uses a version that is older than the required one, you must first update the License Client on the respective system to the most recent version.



Updating the EPLAN License Manager 7.1.7

In order to change from the EPLAN License Manager Version 7.1.x to the new Version 7.1.8 you only have to install the new version. The older version is then removed automatically.

1. Afterwards switch to the directory `ELM` on one of the EPLAN Platform products. Alternatively, you can download the EPLAN License Manager from our support.
 2. Open the `ELM\License Manager (x64)` directory and here double-click the `setup.exe` file.
- ⇒ Your settings in the "Services" and "DCOM" section are transferred automatically when the `setup.exe` file is executed.



Notes:

After updating your EPLAN License Manager to the latest version, your licensing scope is not available anymore. You must activate the new entitlement.

You must have an active Internet connection to activate your license. Alternatively to this an activation can also be carried out offline under http://www.eplan.help/en-us/Infoportal/Content/misc/EPLAN_License/Content/htm/EPLAN_License_rehost_start.htm.

Updating the primary and secondary EPLAN License Manager

Your company network has two EPLAN License Manager applications (primary License Manager and standby License Manager). In this case you must always update the primary License Manager first.

1. Set the start type of the "Remote Dongle Service" for the primary License Manager to "Deactivated". Then stop the service.
 2. Start the installation on the primary License Manager. Open the `ELM\License Manager (x64)` directory and here double-click the `setup.exe` file. Carry out the installation.
- ⇒ Your settings in the "Services" and "DCOM" section are transferred automatically when the `setup.exe` file is executed.
- ⇒ After updating your EPLAN License Manager to the latest version, your licensing scope is not available anymore. A dialog indicates that your license is no more valid. You must then activate the new entitlement.



Notes:

When using bundles they are displayed incorrectly without a valid license. Only after the activation of the bundles are they displayed as incorrect.

You must have an active Internet connection to activate your license. Alternatively, an activation can also be carried out under http://www.eplan.help/en-us/Infoportal/Content/misc/EPLAN_License/Content/htm/EPLAN_License_rehost_start.htm.

3. After a successful installation and activation reset the start type back to "Automatic" and then start the service.
 - ⇒ After a certain updating interval the active standby License Manager now transfers all the tasks back to your primary License Manager.
4. Check whether the primary License Manager is active again and the data transfer has been successful.



Note:

You can run the "ELM Configurator" program to check the process. Once the primary License Manager is active again, the entry "Primary, active" will be displayed in the **Status** field of the **License Manager - Monitor** dialog.

5. Update the standby License Manager. Set the start type of the "Remote Dongle Service" utility to "Deactivated". Then stop the service.
6. Start the `setup.exe` file and then follow the installation commands.
7. After a successful installation reset the start type back to "Automatic" and start the service.
 - ⇒ After a certain updating interval the two EPLAN License Manager synchronize automatically.

Configuring the DCOM Interface

Depending on the operating system, extra configuration of the DCOM interface may be necessary so that the clients can access the computer on which the EPLAN License Manager has been installed.

The computer on which the EPLAN License Manager is installed, and also the clients accessing this computer, should all be members of the same Windows domain.

If this is not the case, then an account with the same name and password must be created on the server for every client user account.

Note:

It is assumed that the DCOM configuration reflects default settings made at the time the respective operating system was installed. If different settings were made, e.g., to increase system security, then you should consult your system administrator.

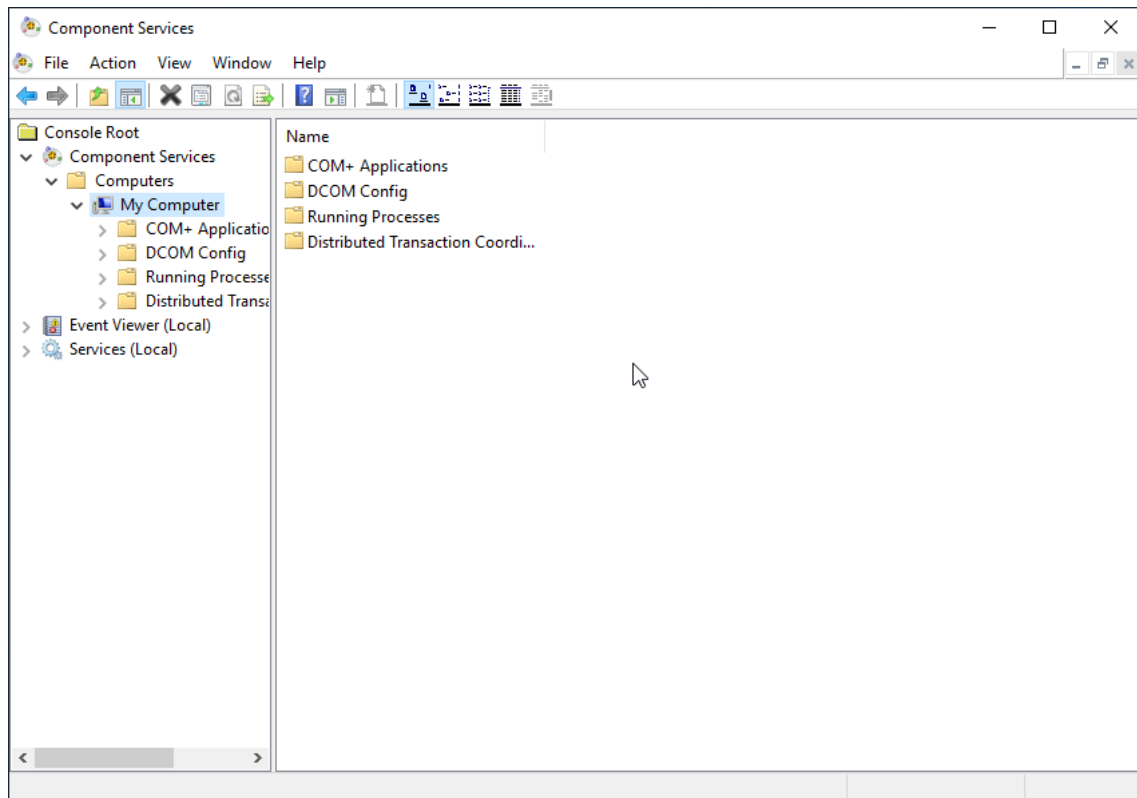
Approved Windows Server Operating Systems

Access to the DCOM interface can be configured either for all domain users or for a group of users.

Both variants are described in the following sections. It is assumed that a group called "ELM Users" has been created in the domain for the second variant.

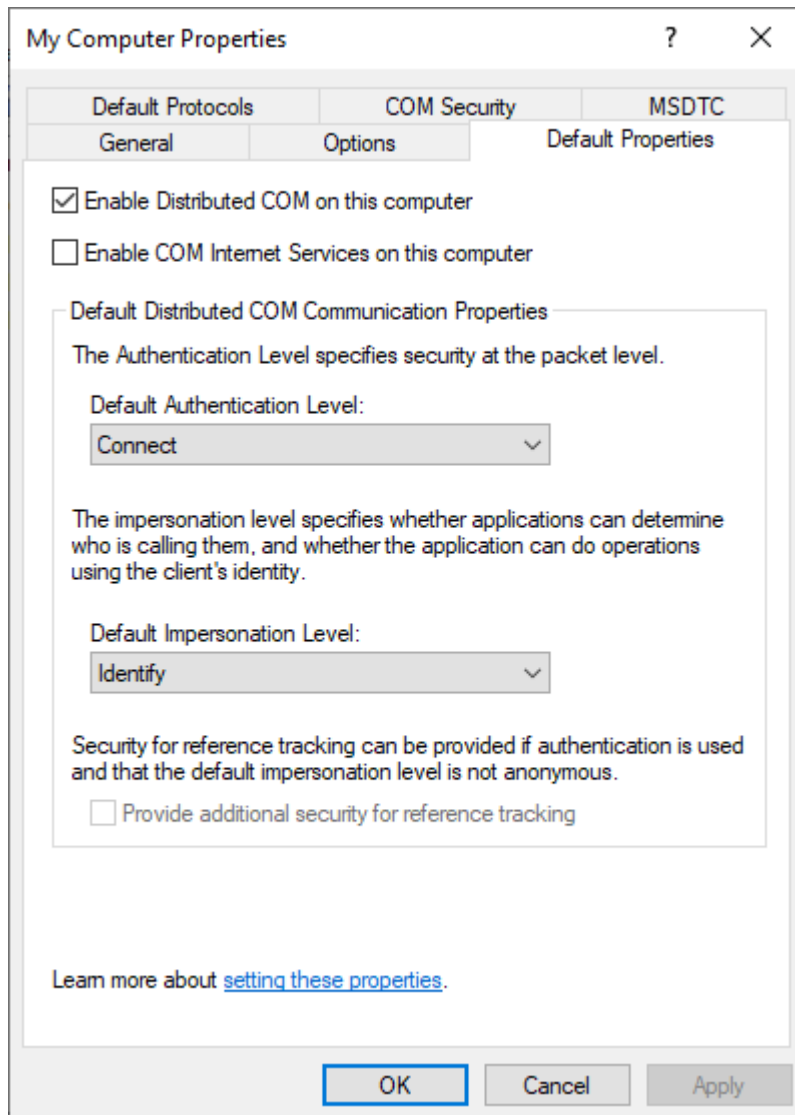
The configuration program for the DCOM interface must first be started.

1. To do this, select **Start > Run**, and enter the `dcomcnfg` command in the **Run** dialog. You can carry out the entry directly under Windows Server 2012.
⇒ The **Component Services** dialog opens.
2. In the tree view of this dialog select **Component Services > Computers > My Computer**.

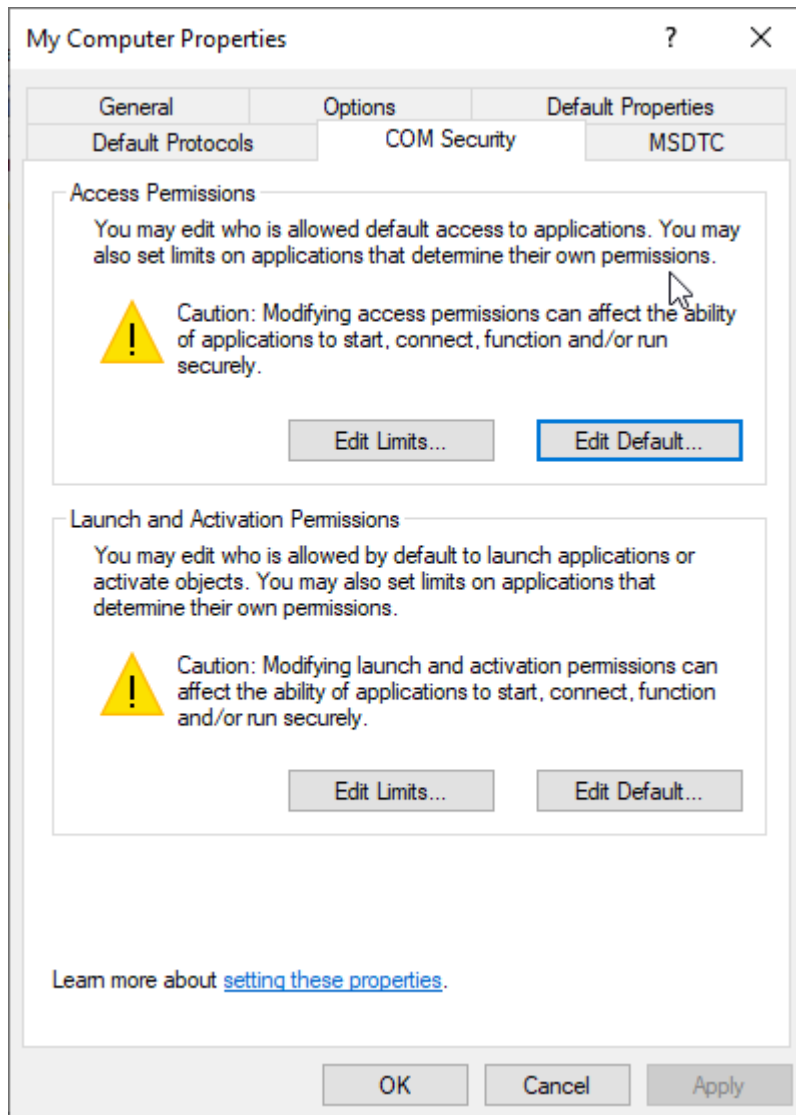


3. Right-click **My Computer** and select **Properties** from the popup menu.

⇒ The **My Computer Properties** dialog opens.



4. In the **Default Properties** tab, make sure that the **Enable Distributed COM on this computer** check box is selected.
5. Change to the **COM Security** tab.

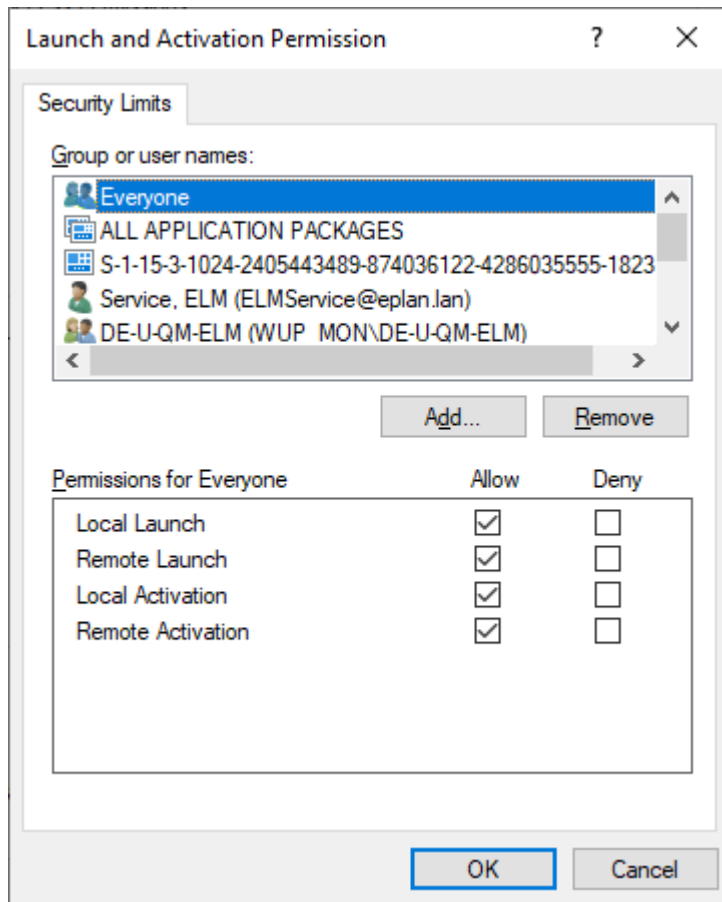


6. Under **Launch and Activation Permissions**, click the **[Edit Limits]** button.

⇒ The **Launch and Activation Permissions** dialog opens.

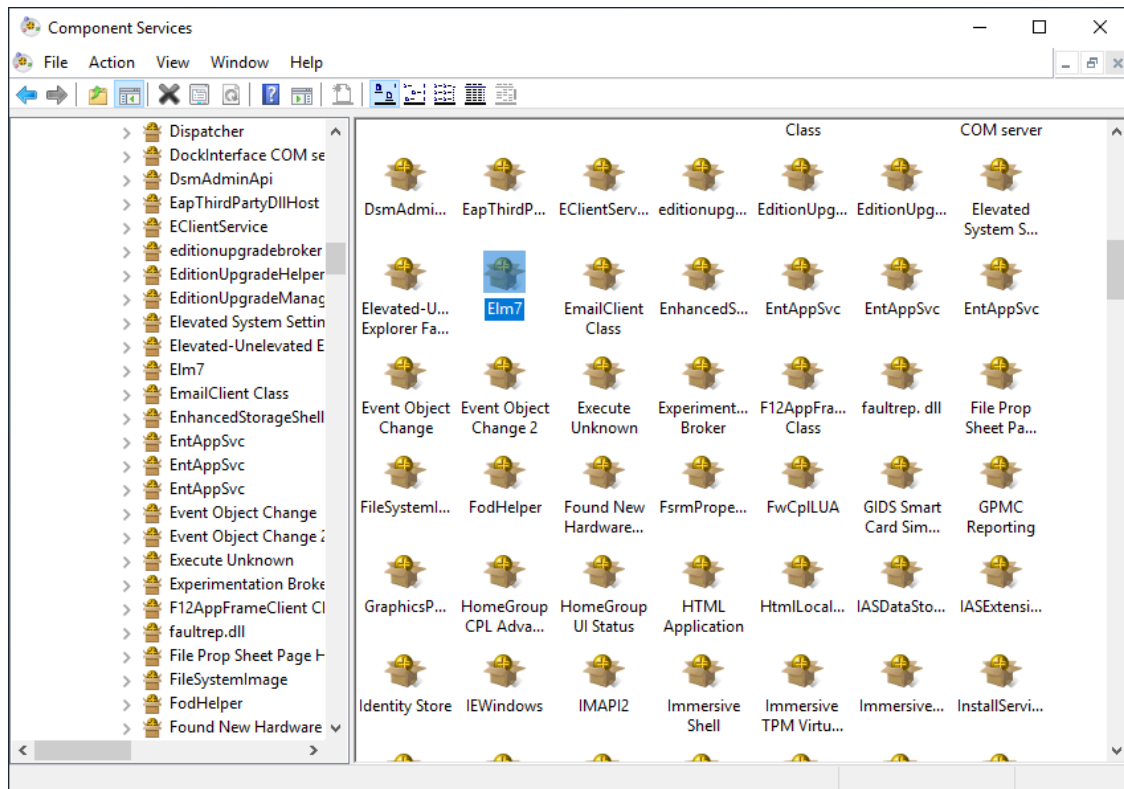
7. Specify the security settings in this dialog:

If access is to be allowed for all users, select **Everyone** and then select the **Allow** check box for all permission types.

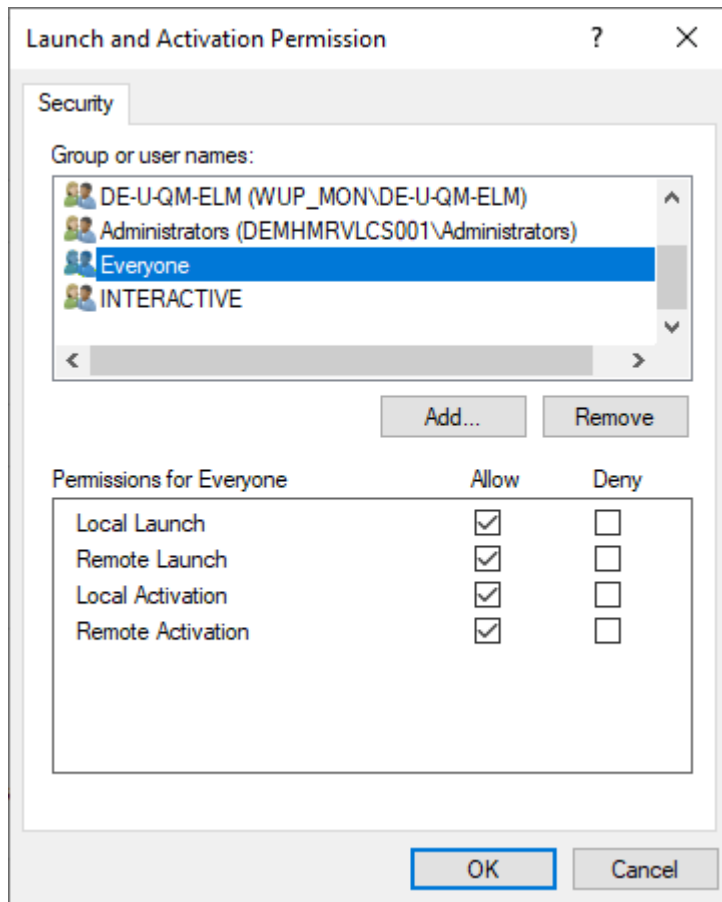


If access is only to be allowed for members of the **ELM Users** group, click the **[Add]** button and select the appropriate group. After this, all four permission types must be activated for this group via the **Allow** check boxes.

8. Close the **Launch and Activation Permissions** and **My Computer Properties** dialogs by clicking **[OK]**.
9. After this, in the tree view of the **Component Services** dialog navigate to the **DCOM Config** folder.



10. On the right side of the dialog, select the component **ELM7**.
11. Right-click this component and select the menu item **Properties** from the popup menu.
 - ⇒ The **ELM7 Properties** dialog opens.
12. Select the **Security** tab.
13. In the **Launch and Activation Permissions** group box, select the **Customize** option and then click the **[Edit]** button.
 - ⇒ The **Launch and Activation Permissions** dialog opens.
14. If access is to be allowed for all users, select **Everyone** and then select the **Allow** check box for all permission types.

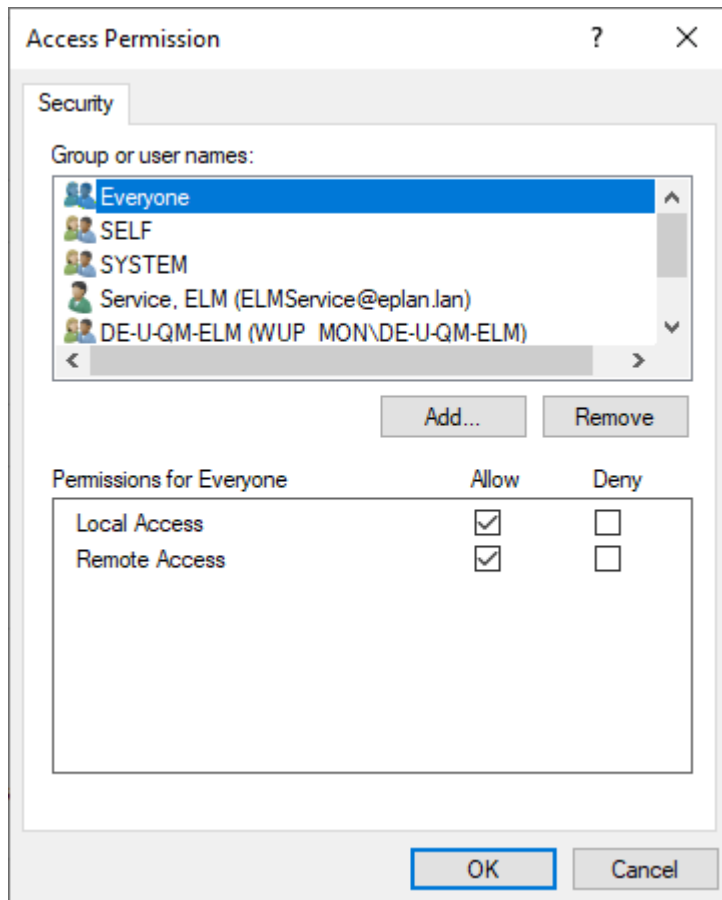


If access is only to be allowed for members of the **ELM Users** group, click the **[Add]** button and select the appropriate group. After this, all four permission types must be activated for this group via the **Allow** check boxes.

15. In the **Access Permission** group box, select the **Customize** option and then click the **[Edit]** button.

⇒ The **Access Permission** dialog opens.

16. If access is to be allowed for all users, select **Everyone** and then select the **Allow** check box for all permission types.

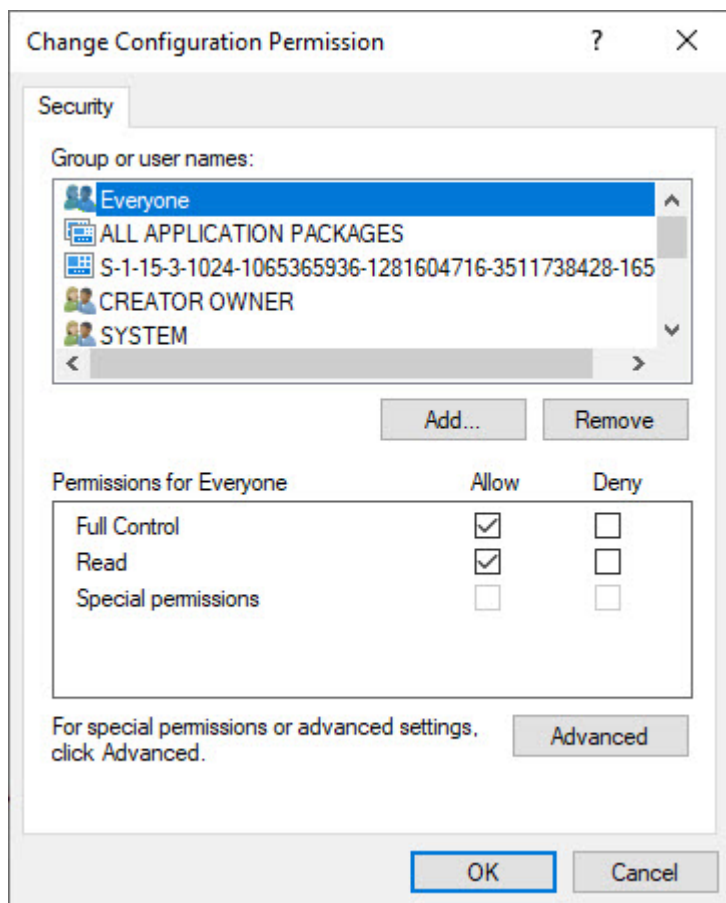


If access is only to be allowed for members of the **ELM Users** group, click the **[Add]** button and select the appropriate group. After this, the permission types must be activated for this group via **Allow**.

17. In the **Configuration Permission** group box, select the **Customize** option and then click the **[Edit]** button.

⇒ The **Change Configuration Permission** dialog opens.

18. If access is to be allowed for all users, select **Everyone** and then select the **Allow** check box for all permission types.



If access is only to be allowed for members of the **ELM Users** group, click the **[Add]** button and select the appropriate group. After this, the permission types must be activated for this group via **Allow**.

19. Close the **Launch and Activation Permissions** and **ELM7 Properties** dialogs by clicking **[OK]**.

⇒ The EPLAN License Manager can now be accessed from every authorized client.

Windows 7, Windows 8.1 and Windows 10

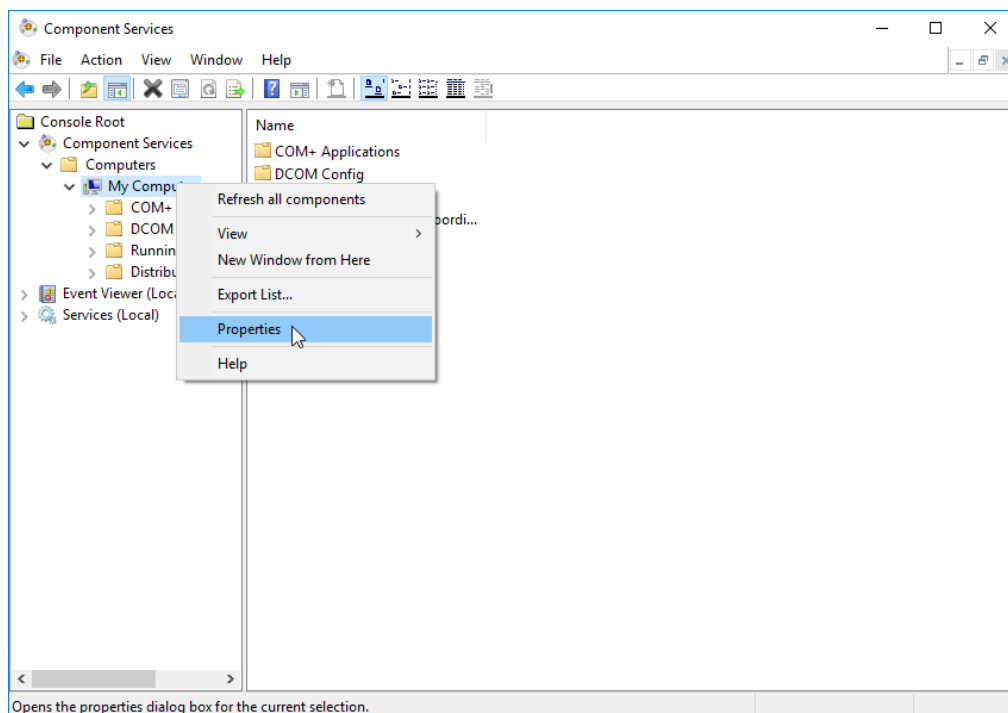
Access to the DCOM interface under Windows 8.1 is described as an example.

Access to the DCOM interface can be configured either for all domain users or for a group of users.

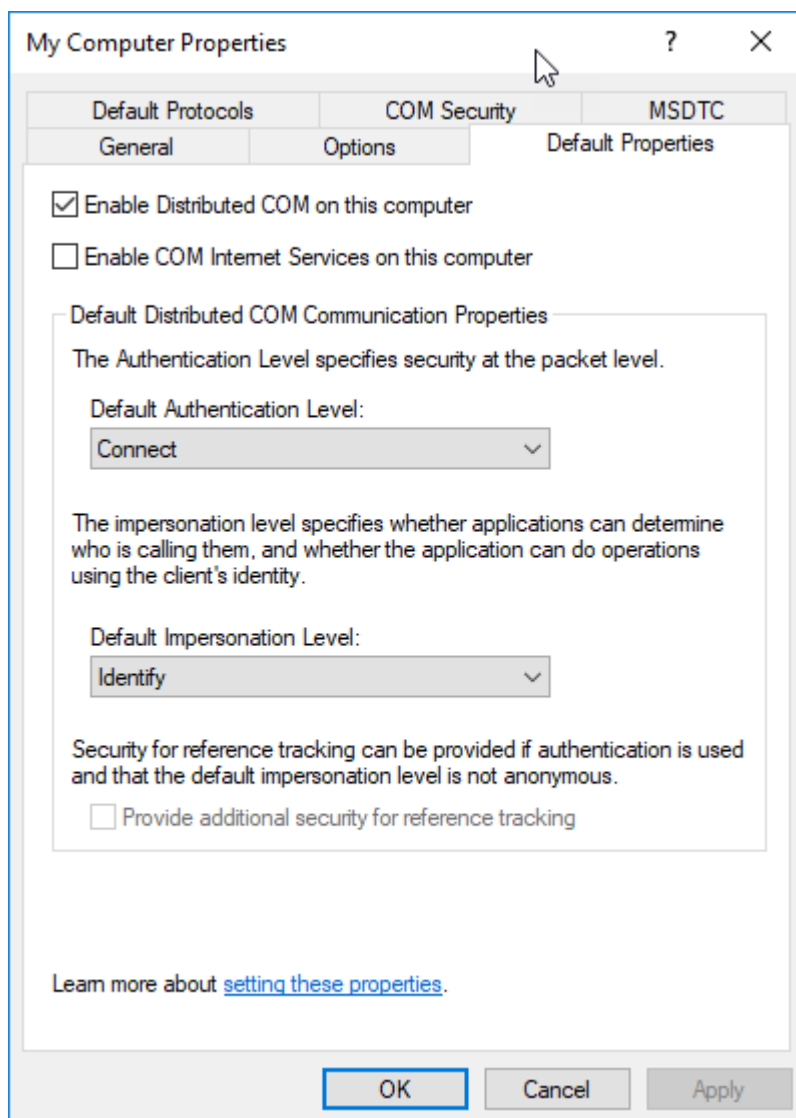
Both variants are described in the following sections. For the second variant, it is assumed that a group called "ELM Users" has been created.

The configuration program for the DCOM interface must first be started.

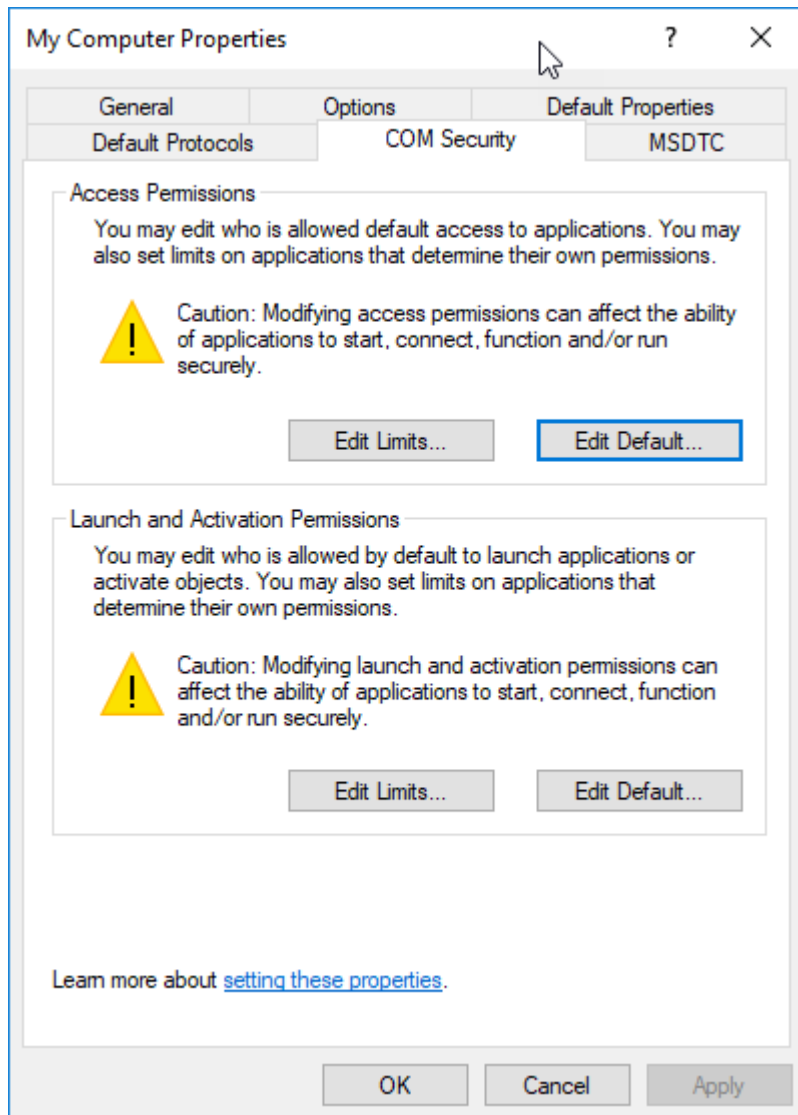
1. Move the cursor to the left-hand lower corner of the user interface and click **Start** to open the Start interface of Windows 8.1.
2. Here enter the command `dcomcnfg` and press **[Enter]** to confirm.
⇒ The **Component Services** dialog opens.
3. In the tree view of this dialog select **Component Services > Computers > My Computer**.
4. Right-click **Workplace** and select the menu item **Properties** from the popup menu.



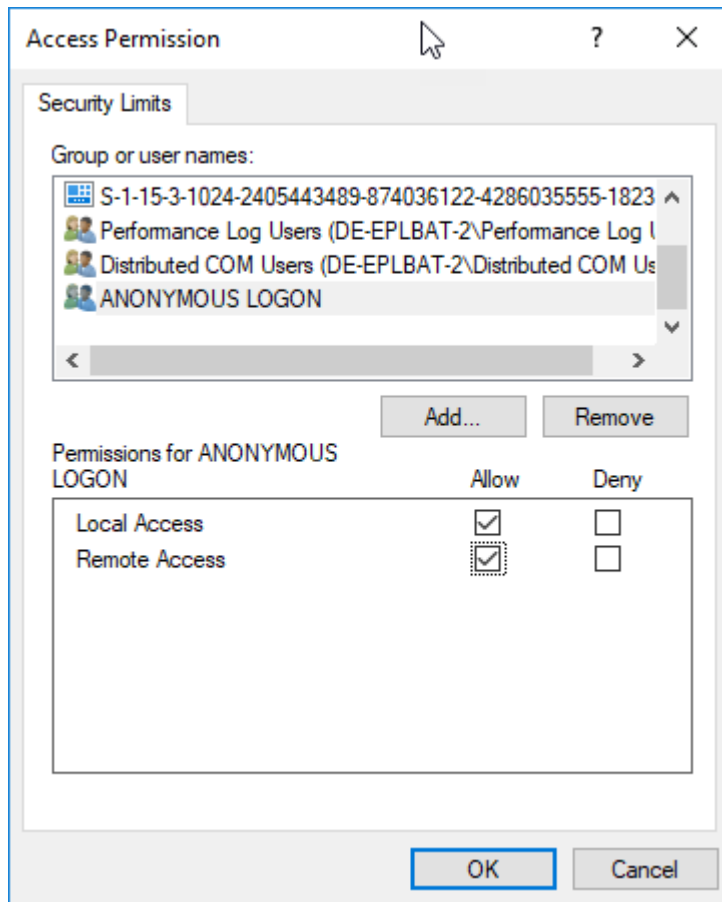
⇒ The **My Computer Properties** dialog opens.



5. In the **Default Properties** tab, make sure that the **Enable Distributed COM on this computer** check box is selected.
6. Change to the **COM Security** tab.



7. Under **Access Permissions**, click the **[Edit Limits]** button.
8. Close the dialog by clicking **[OK]**.

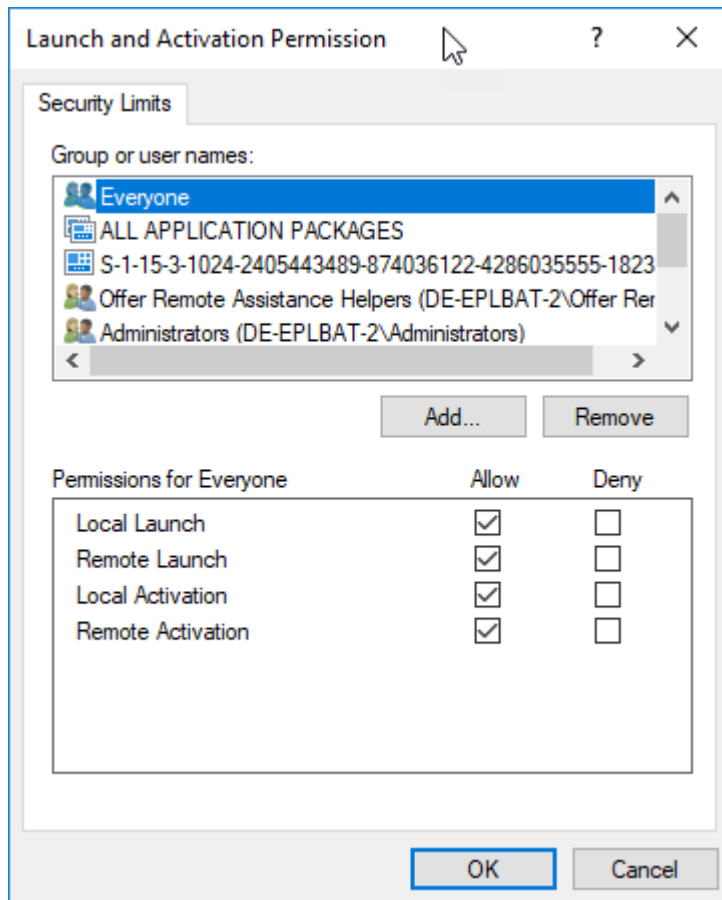


9. In the **My Computer Properties** dialog under **Launch and Activation Permissions**, click the **[Edit Limits]** button.

⇒ The **Launch and Activation Permissions** dialog opens.

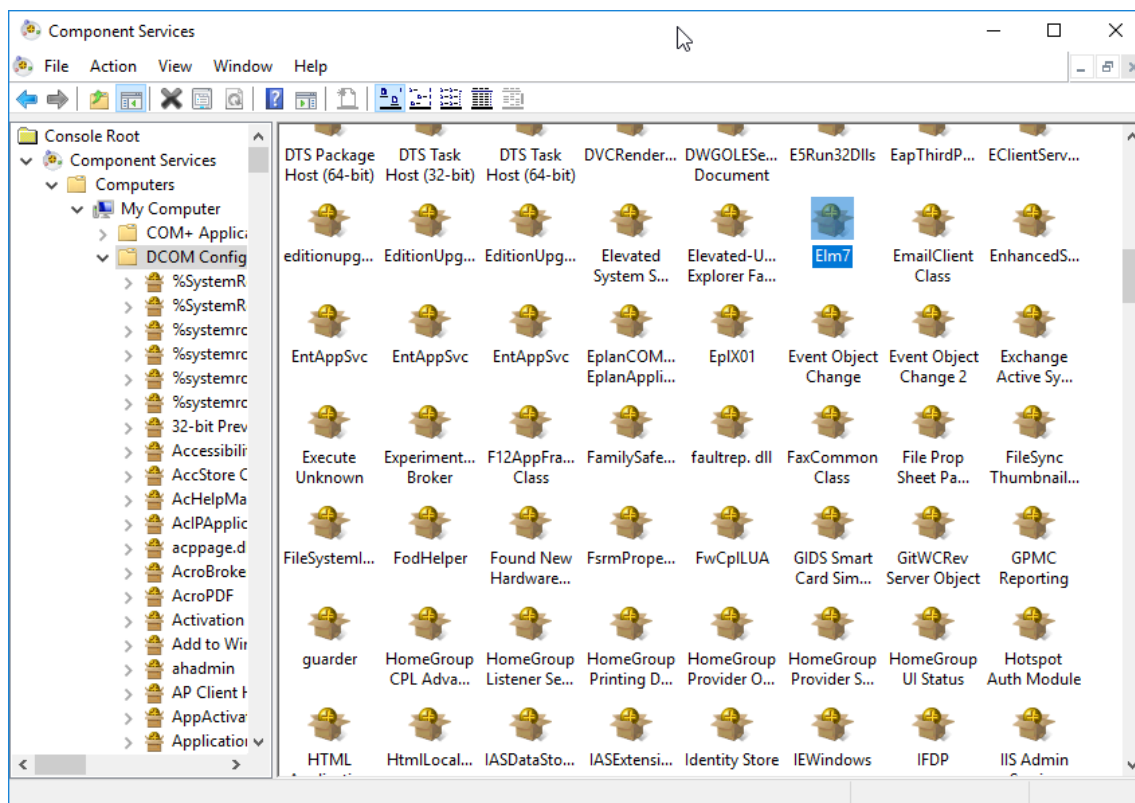
10. Specify the security settings here:

If access is to be allowed for all users, select **Everyone** and then select the **Allow** check box for all permission types.



If access is only to be allowed for members of the **ELM Users** group, click the **[Add]** button and select the appropriate group. Subsequently all the permission types must be activated for this group via **Allow**.

11. Close the **Launch and Activation Permissions** and **My Computer Properties** dialogs by clicking **[OK]**.
12. After this, in the tree view of the **Component Services** dialog navigate to the **DCOM Config** folder.

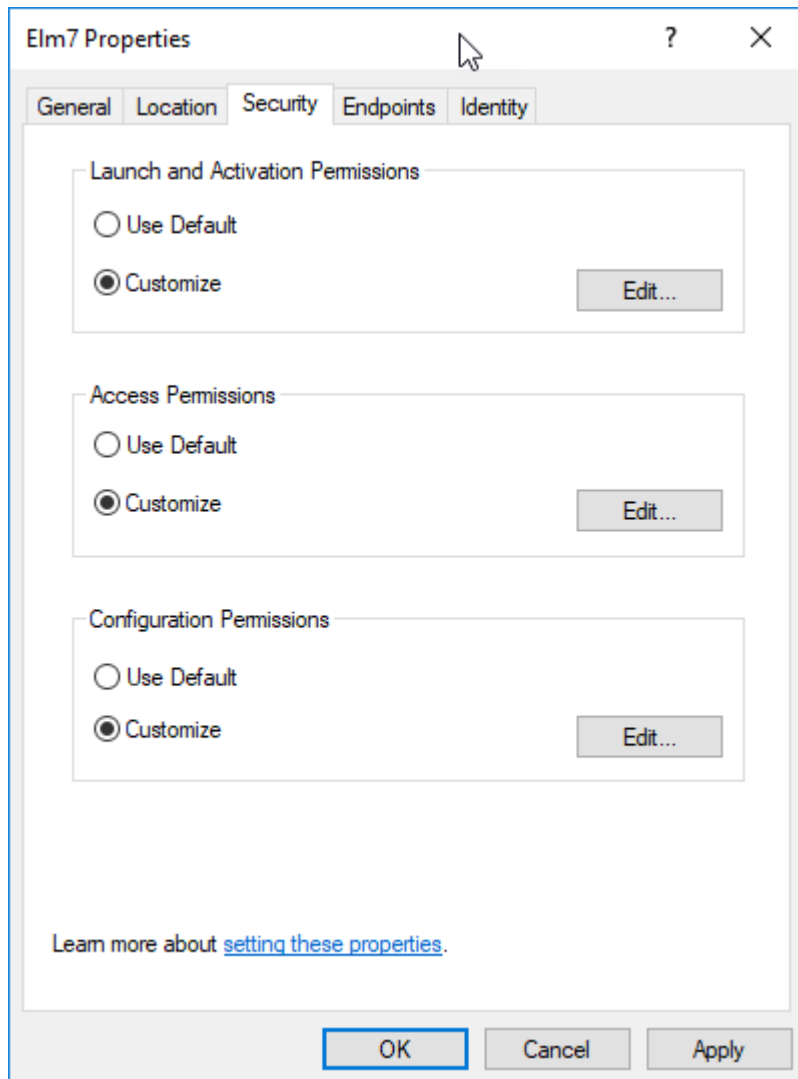


13. On the right side of the dialog, select the component **ELM7**.

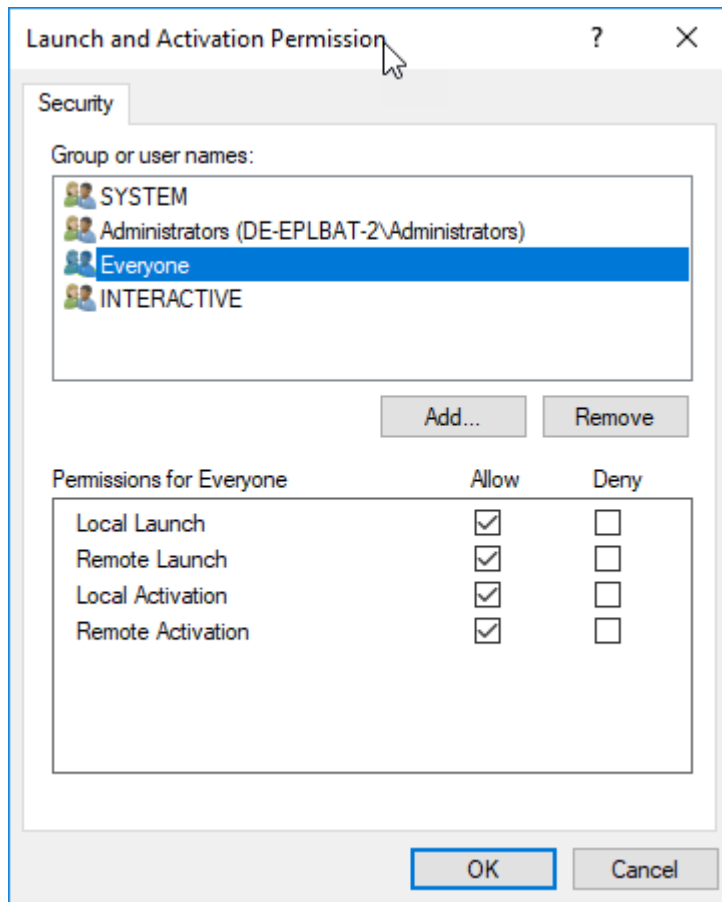
14. Right-click this component and select the menu item **Properties** from the popup menu.

⇒ The **ELM7 Properties** dialog opens.

15. Select the **Security** tab.



16. In the **Launch and Activation Permissions** group box, select the **Customize** option and then click the **[Edit]** button.
⇒ The **Launch and Activation Permissions** dialog opens.
17. If access is to be allowed for all users, select **Everyone** and then select the **Allow** check box for all permission types.



If access is only to be allowed for members of the **ELM Users** group, click the **[Add]** button and select the appropriate group. Subsequently all the permission types must be activated for this group via **Allow**.

18. Close the **Launch and Activation Permissions** and **ELM7 Properties** dialogs by clicking **[OK]**.

⇒ The EPLAN License Manager can now be accessed from every authorized client.

Installing the EPLAN License Manager Monitor

The EPLAN License Manager Monitor can be installed on a server or a client computer.

1. Switch to the directory `ELM`.
2. Open the `ELM\License Tools (x64)` directory and here double-click the `setup.exe` file.
3. In the subsequent dialog click **[Install]**.
⇒ The installation wizard for the EPLAN License Monitor is opened.
4. In the subsequent dialogs follow the instructions of the installation wizard, and click **[Install]** to start the actual installation.
5. Finally, click **[Finish]** to end the installation wizard.

After a successful installation, you will see an "ELM Monitor" shortcut on your desktop. Start the EPLAN License Manager Monitor by double-clicking this icon.



Note:

You can also download the EPLAN License Manager from the download area of the EPLAN Support under <https://www.eplan.de/en/support/download/>.



EPLAN Software & Service GmbH & Co. KG
An der alten Ziegelei 2
40789 Monheim am Rhein · Germany
Phone: +49 (0) 21 73 / 39 64-0
Fax: +49 (0) 21 73 / 39 64-25
Info@eplan.de · www.eplan.de