



**Switching the EPLAN
Project Management to SQL-Server**
EPLAN Platform Version 2.8
Status: 07/2018



EPLAN Software & Service GmbH & Co. KG
Technical Information



Copyright © 2018 EPLAN Software & Service GmbH & Co. KG

EPLAN Software & Service GmbH & Co. KG assumes no liability for either technical or printing errors, or for deficiencies in this technical information and cannot be held liable for damages that may result directly or indirectly from the delivery, performance, and use of this material.

This document contains legally protected proprietary information that is subject to copyright. All rights are protected. This document or parts of this document may not be copied or reproduced by any other means without the prior consent of EPLAN Software & Service GmbH & Co. KG.

The software described in this document is subject to a licensing agreement. The use and reproduction of the software is only permitted within the framework of this agreement.

RITTAL® is a registered trademark of Rittal GmbH & Co. KG.

EPLAN®, EPLAN Electric P8®, EPLAN Fluid®, EPLAN Preplanning®, EPLAN Pro Panel®, EPLAN Smart Wiring®, EPLAN Harness proD®, SYNGINEER and EPLAN Cogineer® are registered trademarks of EPLAN Software & Service GmbH & Co. KG.

Windows 7®, Windows 8.1®, Windows 10®, Windows Server 2008 R2®, Windows Server 2012®, Windows Server 2012 R2®, Microsoft Windows®, Microsoft® Excel®, Microsoft® Access® and Notepad® are registered trademarks of the Microsoft Corporation.

PC WORX®, CLIP PROJECT®, INTERBUS® and PROFINET® are registered trademarks of Phoenix Contact GmbH & Co.

AutoCAD® and AutoCAD Inventor® are registered trademarks of Autodesk, Inc.

STEP 7®, SIMATIC® and SIMATIC HW Konfig® are registered trademarks of Siemens AG.

InstallShield® is a registered trademark of InstallShield, Inc.

Adobe® Reader® and Adobe® Acrobat® are registered trademarks of Adobe Systems Inc.

TwinCAT® is a registered trademark of Beckhoff Automation GmbH.

Unity Pro® is a registered trademark of Schneider Electric.

RSLogix 5000® and RSLogix Architect® are registered trademarks of Rockwell Automation.

All other product names and trade names are trademarks or registered trademarks of their respective owners.

EPLAN uses the Open Source software 7-Zip (7z.dll), Version 16.00, Copyright © by Igor Pavlov. The source code of 7-Zip is subject to the GNU Lesser General Public License (LGPL). The source code of 7-Zip and details on this license can be found on the following Web site: <http://www.7-zip.org>

EPLAN uses the Open Source software Open CASCADE, Version 7.2.0, Copyright © by Open CASCADE S.A.S. The source code of Open CASCADE is subject to the Open CASCADE Technology Public License. The source code of Open CASCADE and details on this license can be found on the following Web site: <http://www.opencascade.org>

EPLAN provides an import function which uses eCl@ss. Usage of the eCl@ss standard is subject to license and requires registration and ordering in the DownloadPortal: <http://www.eclssdownload.com>

EPLAN uses the dotNetRDF © library: <http://www.dotnetrdf.org>, Copyright (c) 2009-2013 dotNetRDF Project (dotnetrdf-develop@lists.sf.net). The source code is subject to the MIT license: <https://opensource.org/licenses/MIT>

EPLAN uses Google Chromium ©, Version 57. <https://www.chromium.org>, Copyright © 2015 The Chromium Authors. The source code is subject to the BSD license.



EPLAN uses the Chromium Embedded Framework ©, Version 2987.
<https://bitbucket.org/chromiumembedded/cef>, Copyright © 2008-2014 Marshall A. Greenblatt. Portions
Copyright © 2006-2009 Google Inc. The source code is subject to the BSD license.

EPLAN uses CEFSharp ©, Version 57. <https://cefsharp.github.io>, Copyright © 2010-2017 The
CefSharp Authors. The source code is subject to the BSD license.

EPLAN uses Microsoft Unity ©, Version 4.0.1. <https://github.com/unitycontainer/unity>, Copyright ©
Microsoft. The source code is subject to the Apache license, Version 2.0.

This application incorporates Teigha® software, version 4.3.2, pursuant to a license agreement with
Open Design Alliance. Teigha® Copyright © 2002–2017 by Open Design Alliance. All rights reserved.

EPLAN uses the PDFlib library, version 9.1.1, Copyright © by PDFlib GmbH. All rights reserved.

The complete license texts for the Open Source licenses mentioned above are available in the follow-
ing file:

<Installation directory>\bin\License.txt



Table of Contents

Introduction 5

Notes for the Reader 6

Requirements 8

Switching the Project Management 9

Establishing the Connection to SQL Server and Database 9

Reading Projects into the SQL Database 12

Reading More Directories into Project Management 13

Introduction

Dear users,

The team at EPLAN Software & Service GmbH & Co. KG is pleased to welcome you as a new user.

This document describes how you can switch the EPLAN project management over to the *Microsoft SQL Server 2014*. We are carrying out this switch for "EPLAN Electric P8" as an example. A corresponding transition is possible for the following program variants of the EPLAN platform:

- EPLAN CPM
- EPLAN Education
- EPLAN Electric P8
- EPLAN Fluid
- EPLAN Preplanning
- EPLAN ProPanel
- EPLAN Trial.

These instructions are intended for administrators who are already familiar with EPLAN and who know how to configure an SQL Server.



Note:

We used the fully licensed program variant "EPLAN Electric P8" and the SQL Server "Microsoft SQL Server 2014 Express" when drawing up this document. If you use a different variant or have not licensed all the modules for P8 or use a different Microsoft SQL Server version, the figures in this documentation may possibly go beyond the scope of functionality of the software you have purchased, that is, functions are also described which are not available to you.

Notes for the Reader

Before you begin reading, please note the following symbols and styles used in this document:

Warning:

Text preceded by this symbol contains a warning; you should be absolutely sure to read this warning before proceeding!

Note:

Text preceded by this symbol contains extra notes.

Tip:

Useful tips to facilitate your interaction with the program are presented after this image.

Example:

Examples are highlighted by this symbol.

- User interface elements are marked in **bold** so they can immediately be located in the text.
- *Italic* text provides particularly important information that you should definitely pay attention to.
- Code examples, directory names and direct entries (among other things) are displayed in a `non-proportional` font.
- Function keys, keyboard keys, and buttons within the program are shown in square brackets (e.g., **[F1]** for the "F1" function key).
- To improve the flow of the text, we often use "menu paths" in this document (for example, **Help > Contents**). In order to find a particular program function, the menus and options shown in a menu path must be selected in the sequence shown. For example, the menu path mentioned above calls up the EPLAN help system.

- The operating information provides step-by-step instructions for reaching specific targets, and in many places, after the right-arrow symbol ⇒ you'll also find the program's reaction to your action.
- In combination with settings or fields (e.g., check boxes) which can only be switched on or off, in this document we often use the term "activate" (after which the setting is active) and "deactivate" (after which the setting is inactive) .
- In combination with settings or fields (e.g., check boxes) which can only be switched on or off, in this document we often use the term "activate" (after which the setting is active) and "deactivate" (after which the setting is inactive) .

Requirements

You require one of the following Microsoft SQL Server programs in order to switch the project management over to an SQL Server:

Microsoft SQL-Server 2012 / 2014 / 2016 / 2017 Express / Standard or Enterprise Edition.

More information about the software requirements and approvals can be found on the homepage:

http://www.eplan.help/help/platform/2.8/en-US/help/EPLAN_Help.htm

You can find the topic *Software Requirements and Approvals* by clicking on the **NEWS** tile on the start page and opening the chapter *Other New Features and Information*.



Notes:

- Please note that you must have installed a Microsoft SQL Server 2012 / 2014 / 2016 /2017 in your company in order to switch the project management. If this is not the case, contact your SQL system administrator.
- If you use the "SQL Server 2012 / 2014 / 2016 / 2017 Express" version, you must have installed the Management Studio Express as well in order to manage the databases and users.
- For further information about the individual versions of the Microsoft SQL Server operating system please refer to the Microsoft Internet sites.

If you do *not* have administrator rights on the SQL Server, please contact your SQL system administrator. You furthermore need the name of the server and have to be set up as a user (with the corresponding password) on the SQL Server in order to establish a connection to the SQL Server.

Switching the Project Management

Establishing the Connection to SQL Server and Database

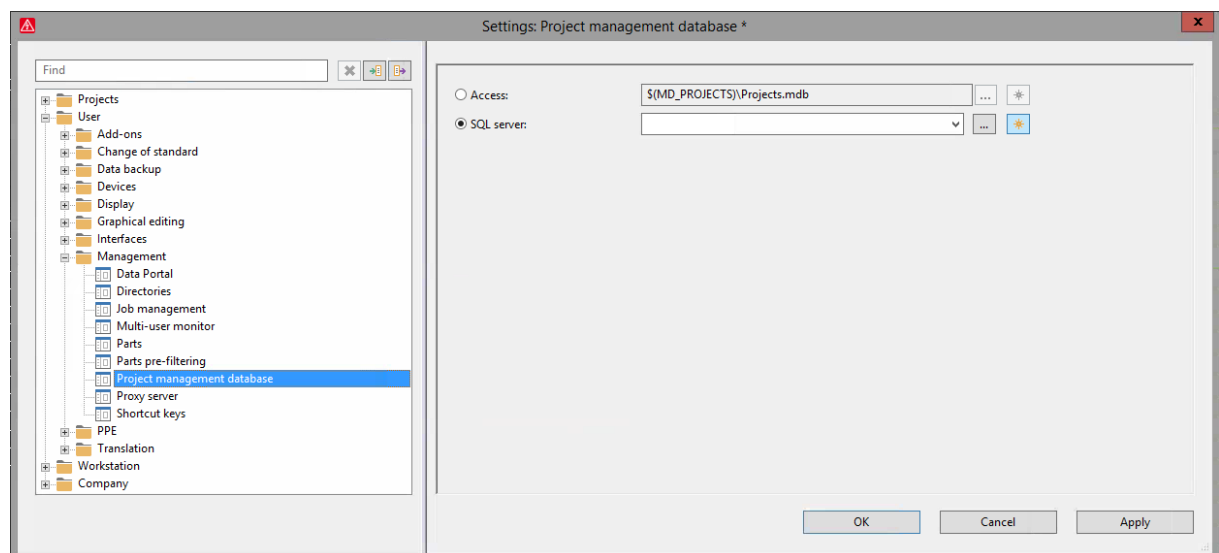
Caution:

In order to create a database with the EPLAN table structure on the SQL Server you require administrator rights on the SQL Server for the following steps. Please contact your SQL system administrator to this purpose.

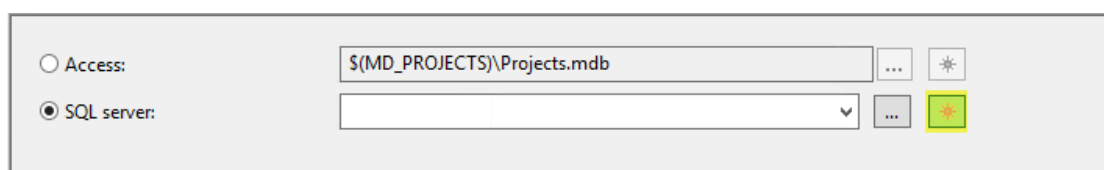
Open the settings dialog for the project management in order to set up the SQL Server.

1. Select **Options > Settings > User > Management > Project management database**.

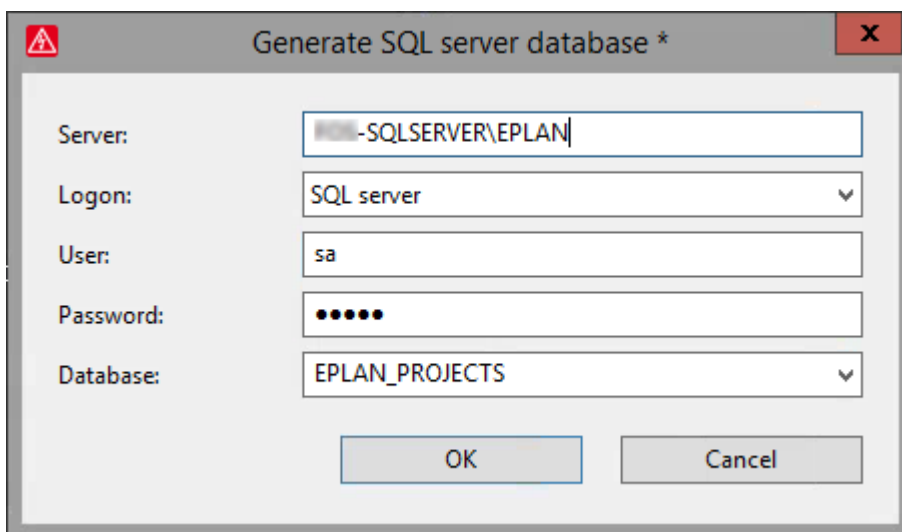
⇒ The **Settings: Project management database** dialog is opened.



2. Select the **SQL server** option and click **[New]**.



⇒ The **Generate SQL server database** dialog is opened.



3. Enter the server name and the instance name of the SQL server in the **Server** field.
4. Enter a new name for your project management database in the **Database** field.

 **Caution:**

Do not use hyphens in the name of the SQL database.

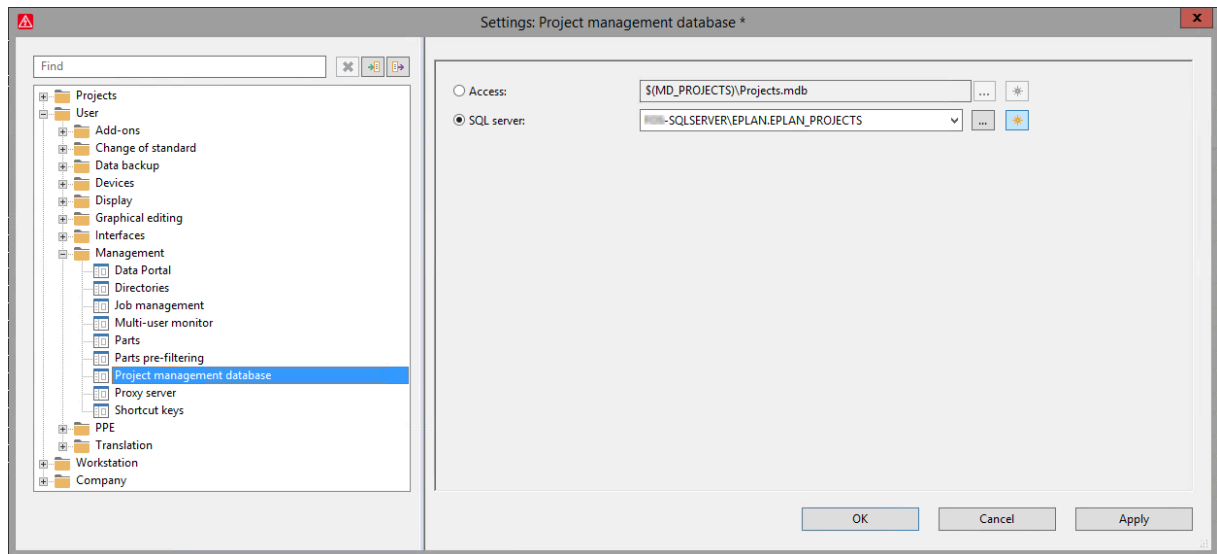
5. During **Login**, select the variant specified by your SQL administrator.

 **Note:**

You have two possibilities for logging on to an SQL Server:
"Windows authentication" uses the logon data of your Windows user account.
If "SQL Server" is selected, you use a separate user name and password.
If a user has not been set up yet for accessing the SQL server, please contact your SQL system administrator.

6. Confirm your settings in the **Generate SQL server database** dialog by clicking **[OK]**.

⇒ The new database is created.



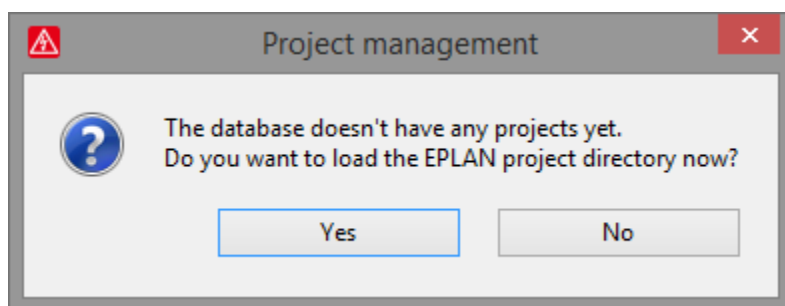
7. Click **[OK]** to confirm the settings.

Reading Projects into the SQL Database

After you have successfully created a database on the SQL Server, it does not yet contain any projects. Carry out the following steps to read your projects successfully into the database:

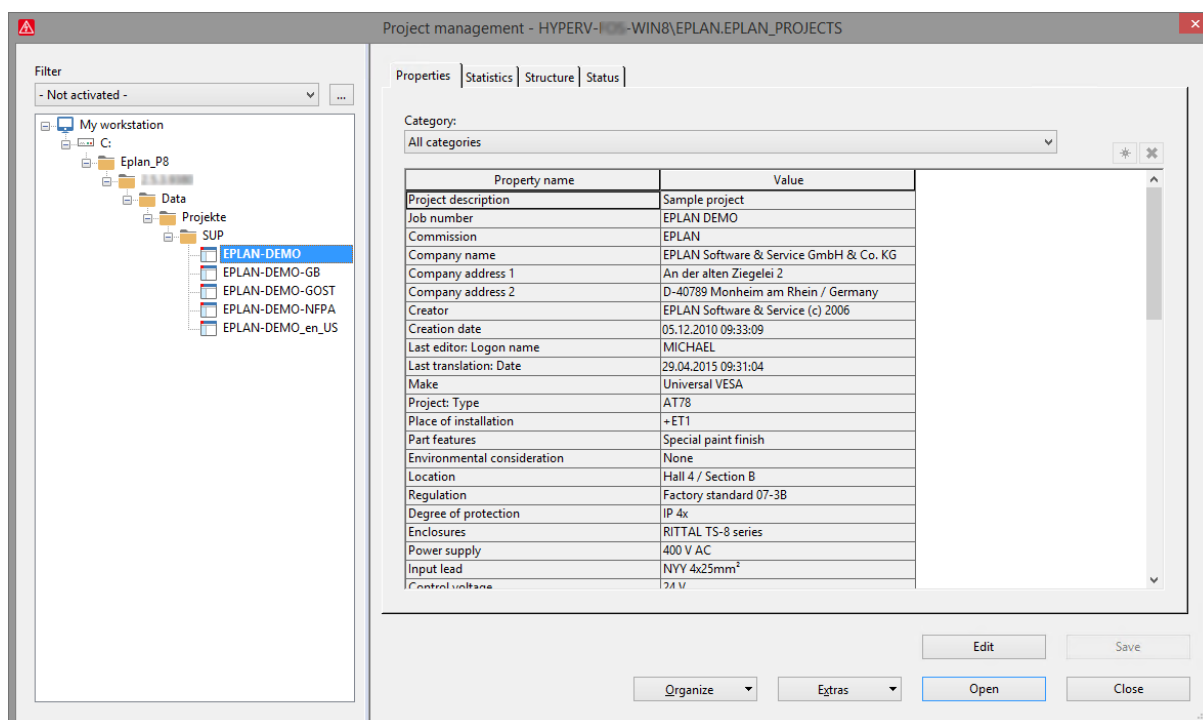
1. Select **Project > Management**.

⇒ The **Project management** message is opened.



2. Click **[Yes]** to read in the projects that are located in the set EPLAN project directory.

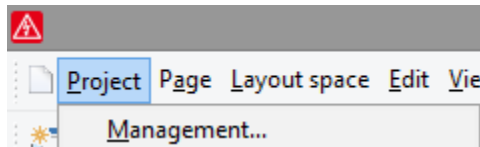
⇒ The **Project management** dialog opens.



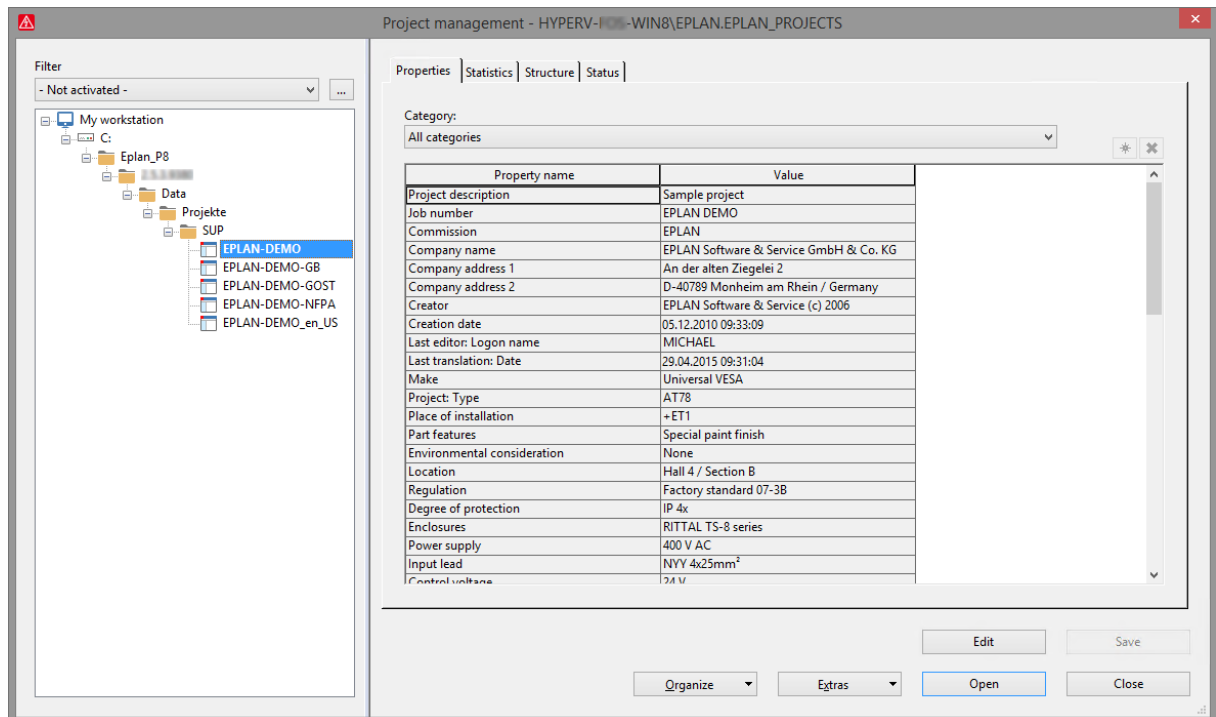
Reading More Directories into Project Management

If you want to read projects from other directories into the project management, proceed as follows:

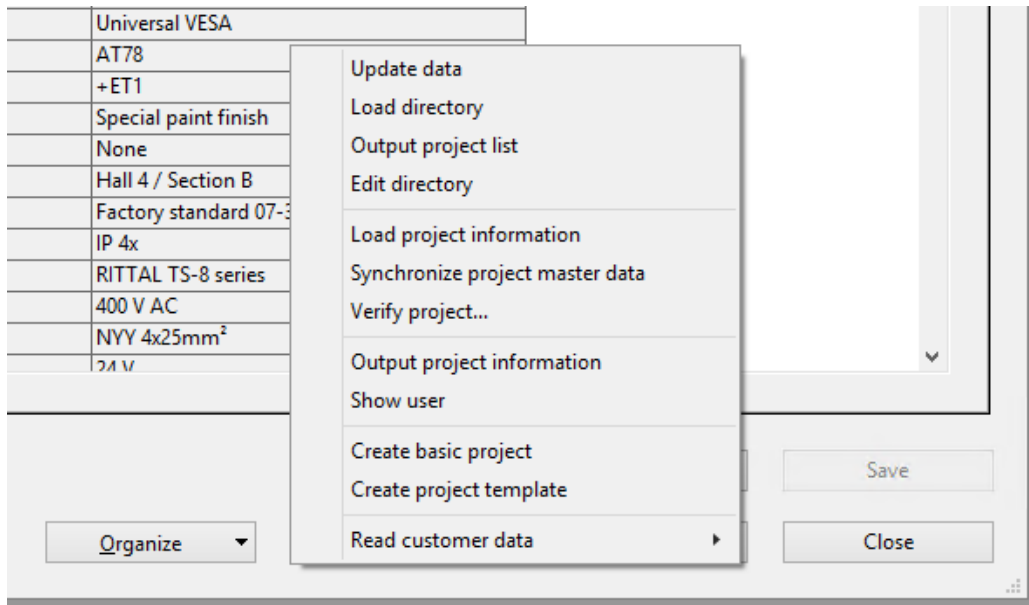
1. Select **Project > Management**.



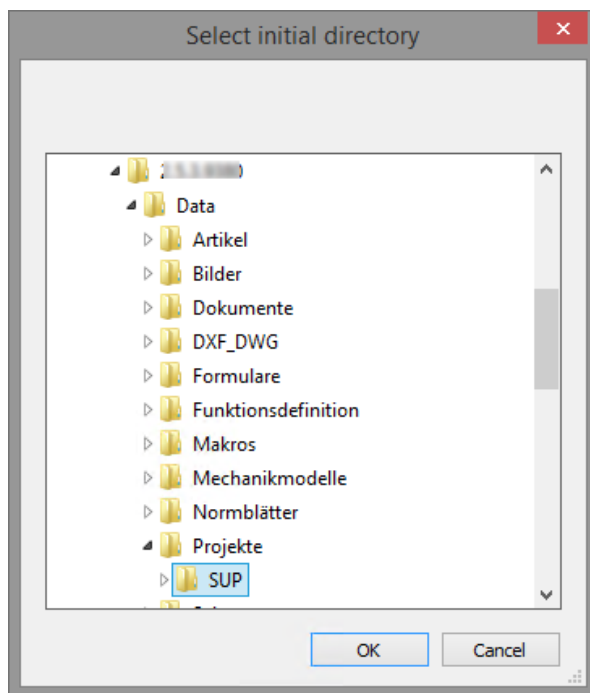
⇒ The **Project management** dialog opens.



2. Click **[Extras] > Load directory**.



- ⇒ The **Select initial directory** dialog is opened.



3. Select the desired directory and click **[OK]**.

- ⇒ All the projects from the selected directory and its subdirectories are read into project management.



**Switching the EPLAN
Project Management to SQL-Server**
EPLAN Platform Version 2.8
Status: 07/2018



EPLAN Software & Service GmbH & Co. KG
An der alten Ziegelei 2
40789 Monheim am Rhein · Germany
Phone: +49 (0) 21 73 / 39 64-0
Fax: +49 (0) 21 73 / 39 64-25
Info@eplan.de · www.eplan.de